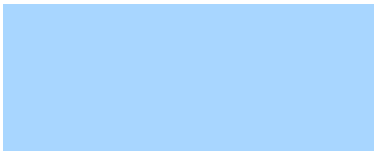




Ullaakut

Quviasummarikpunga takugatsi



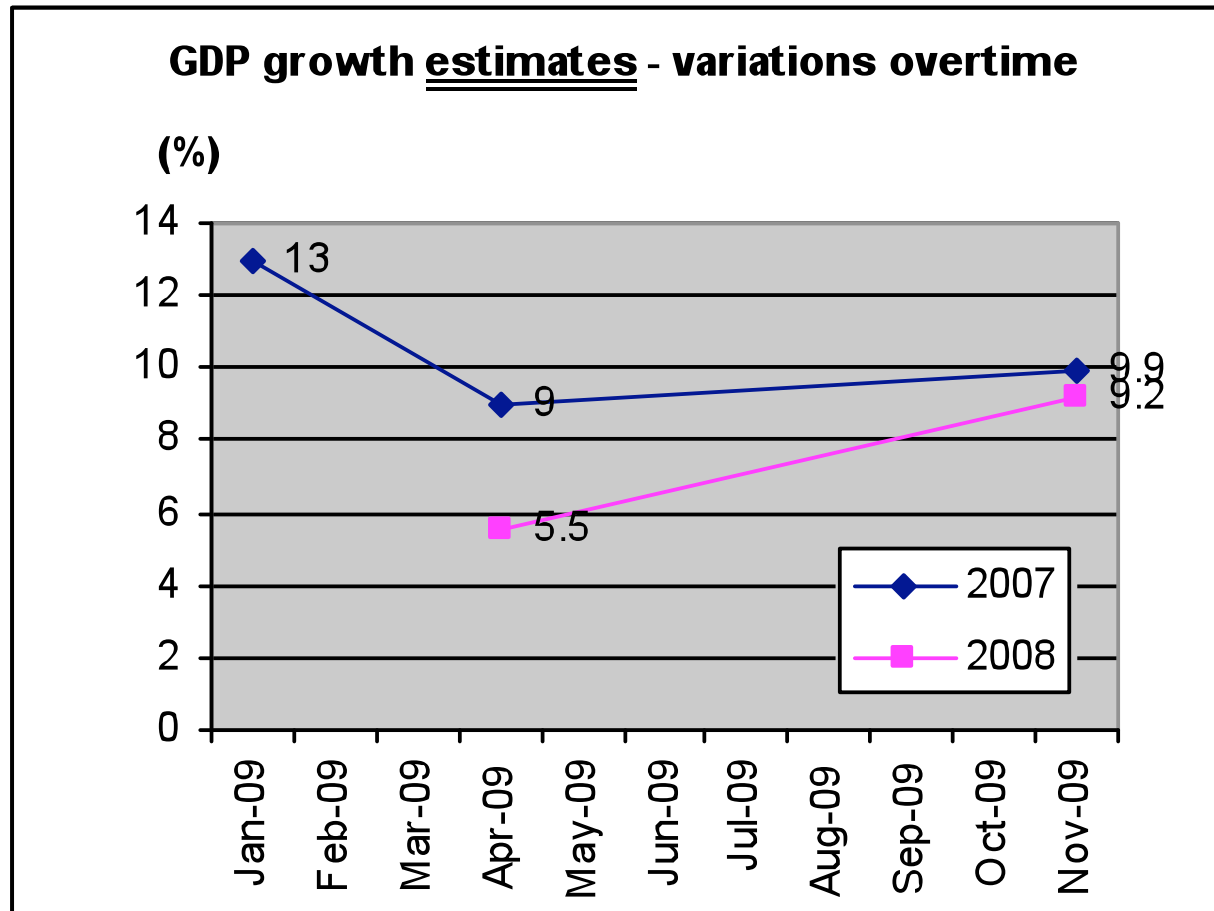


Department of Economic Development & Transportation

1. Statistical Environment



Department of Economic Development & Transportation



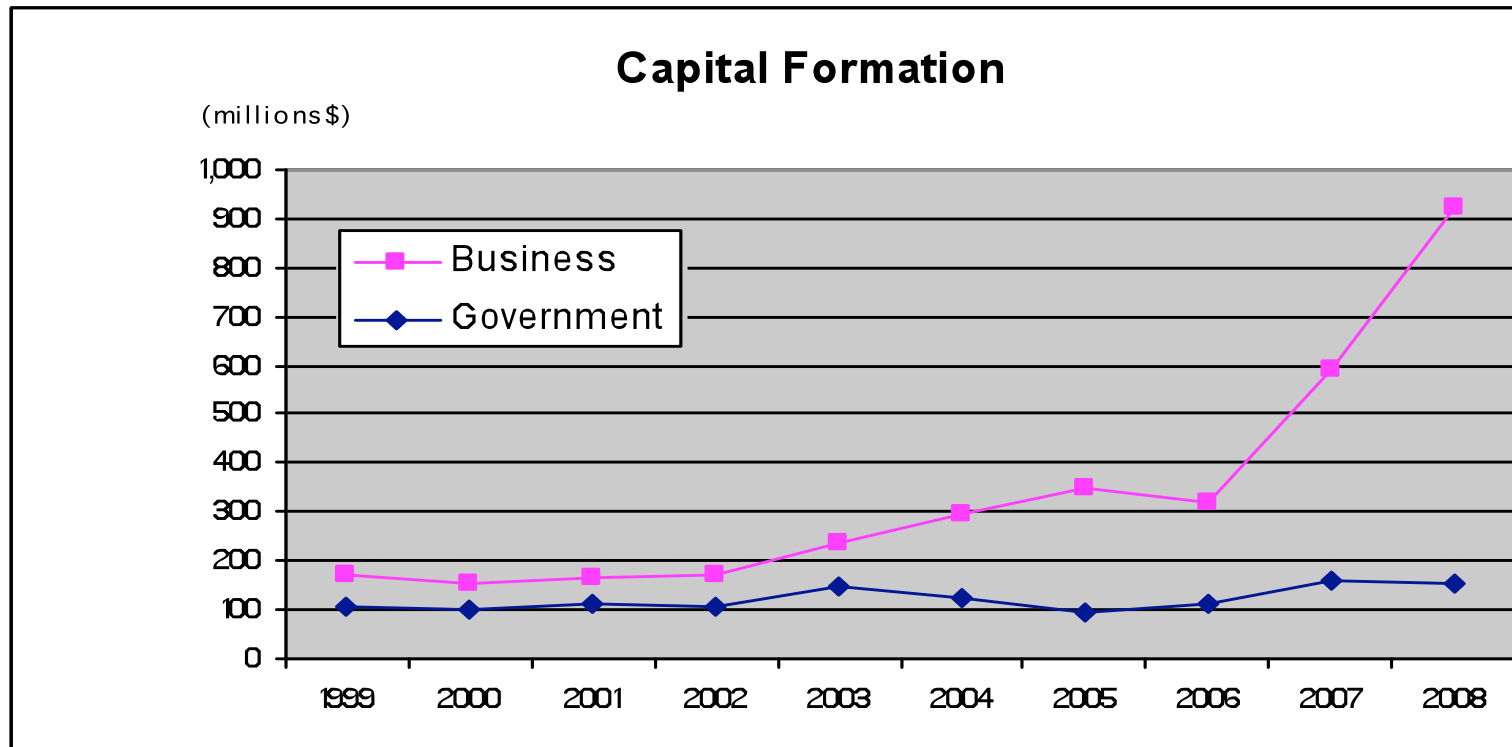


Department of Economic Development & Transportation

2. Capital Investment

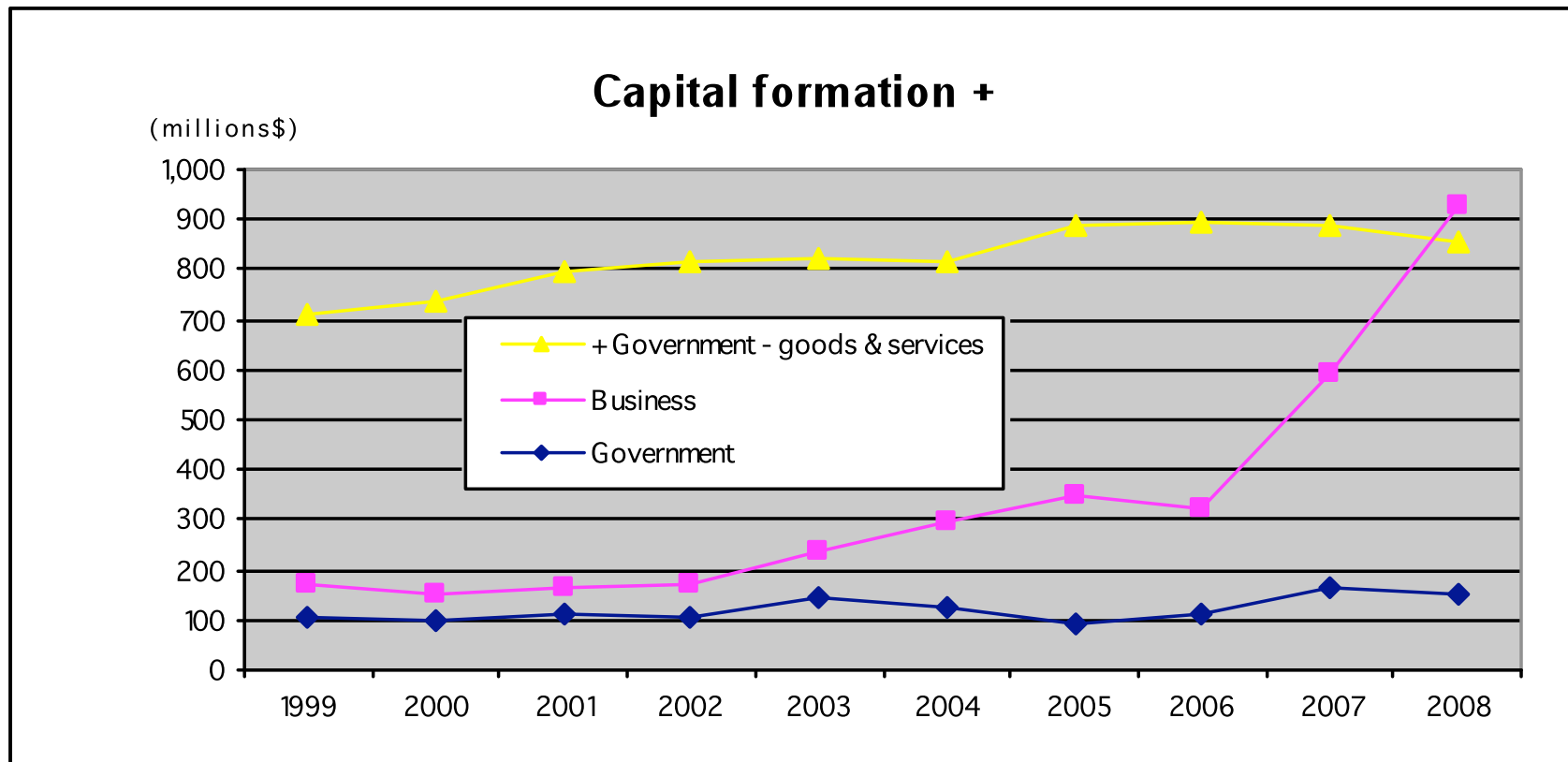


Department of Economic Development & Transportation





Department of Economic Development & Transportation



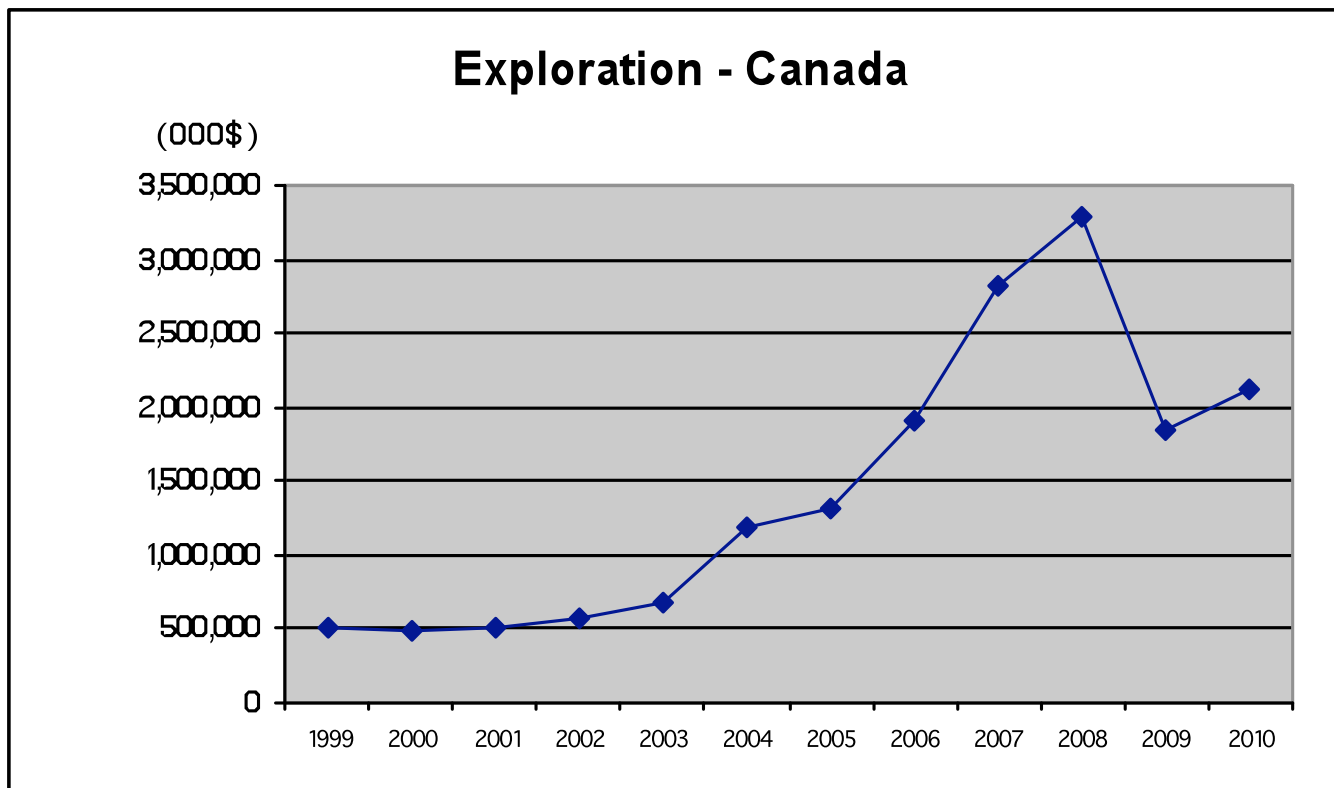


Department of Economic Development & Transportation

3. Exploration

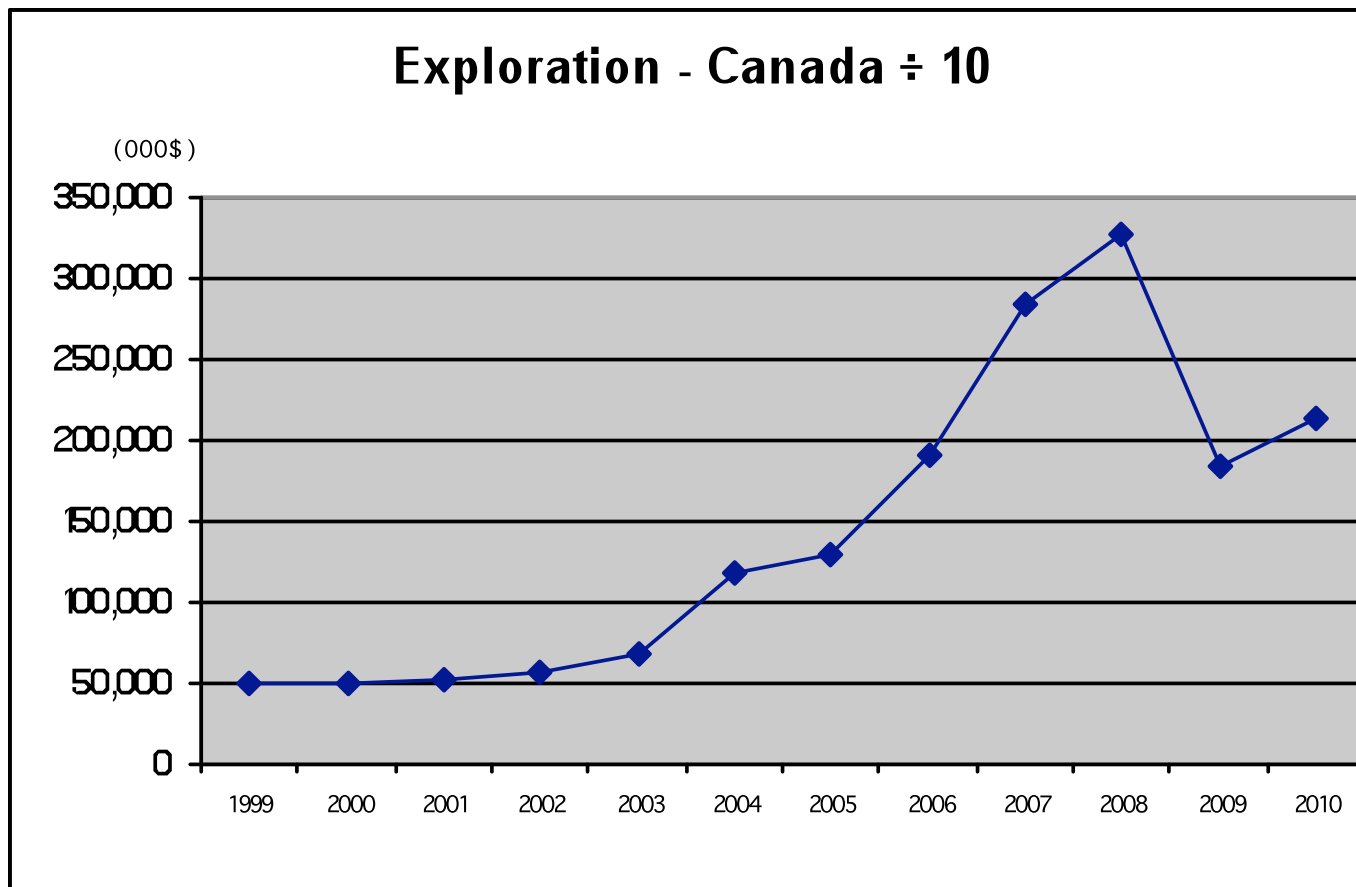


Department of Economic Development & Transportation



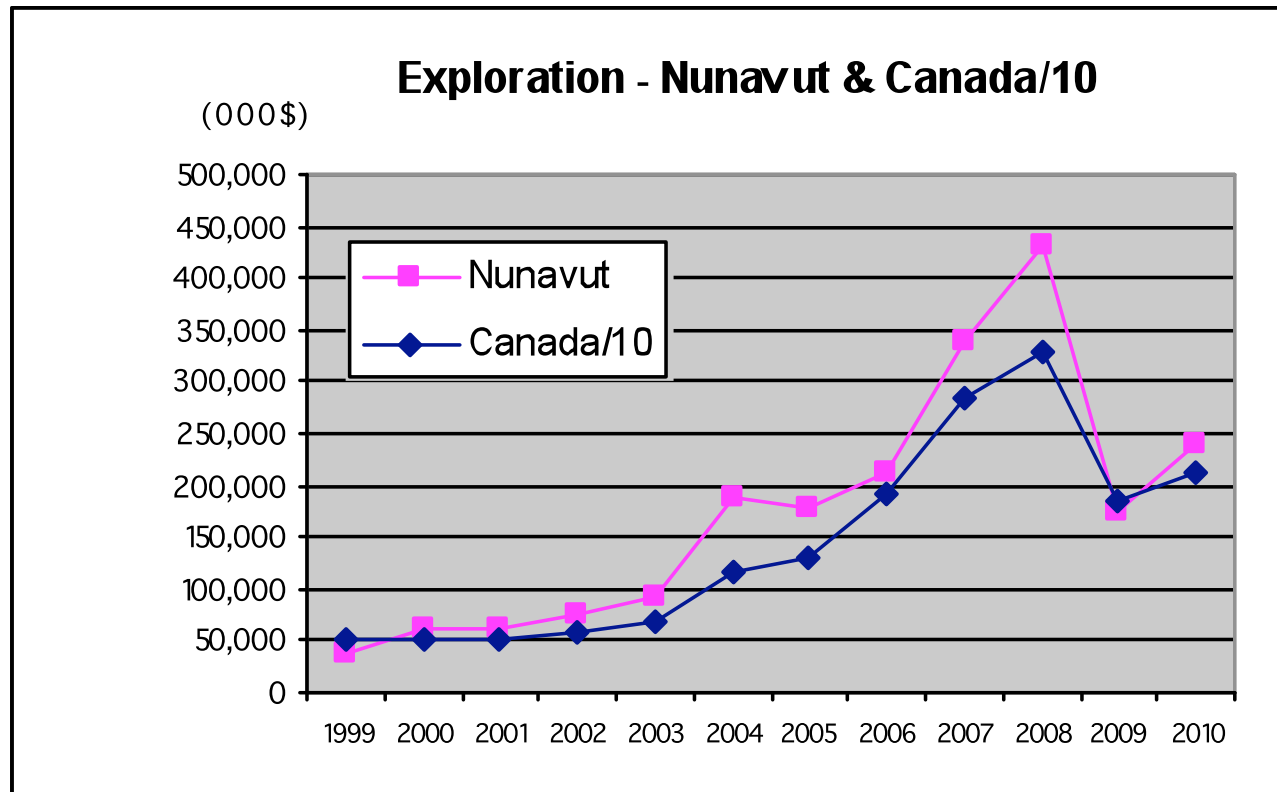


Department of Economic Development & Transportation



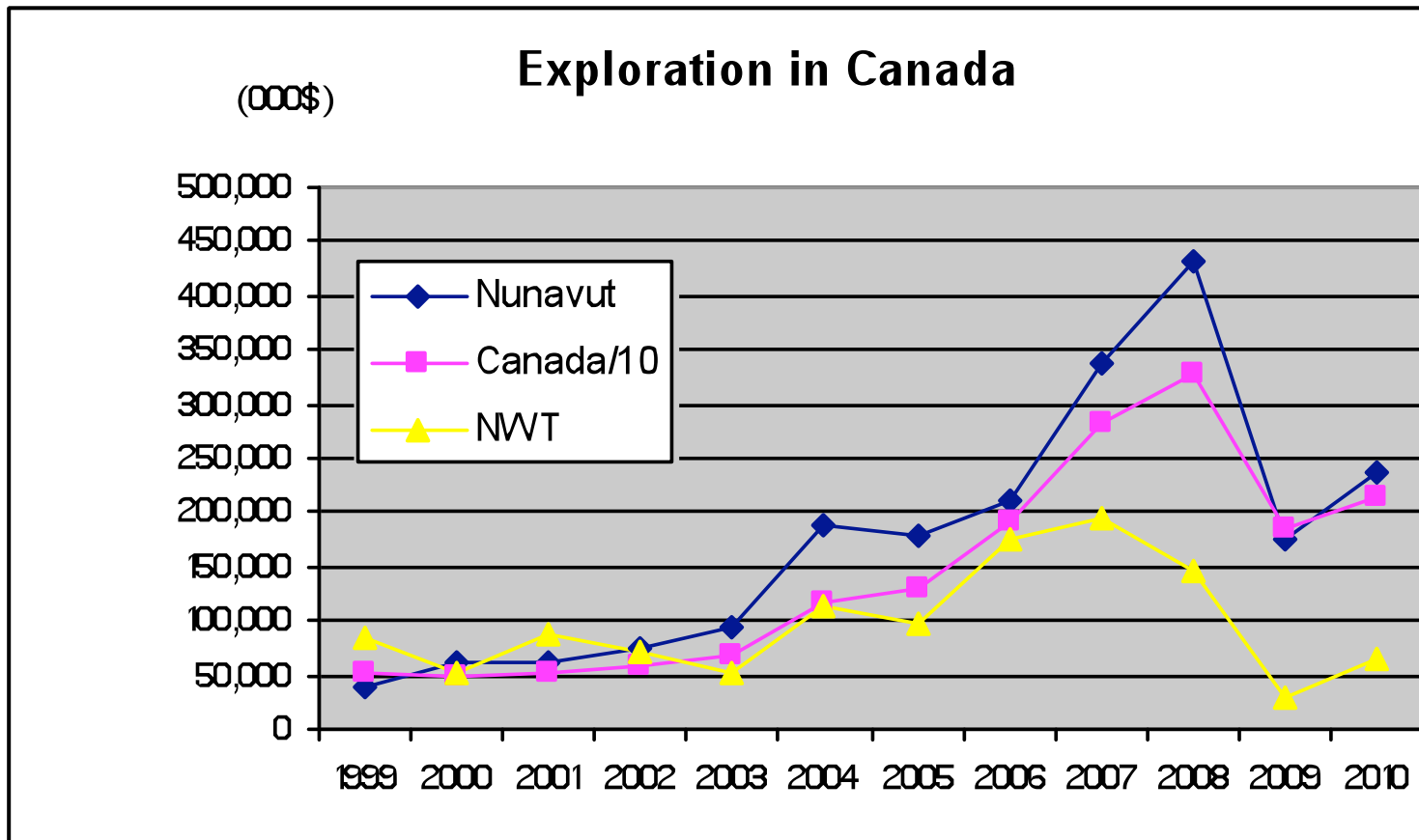


Department of Economic Development & Transportation





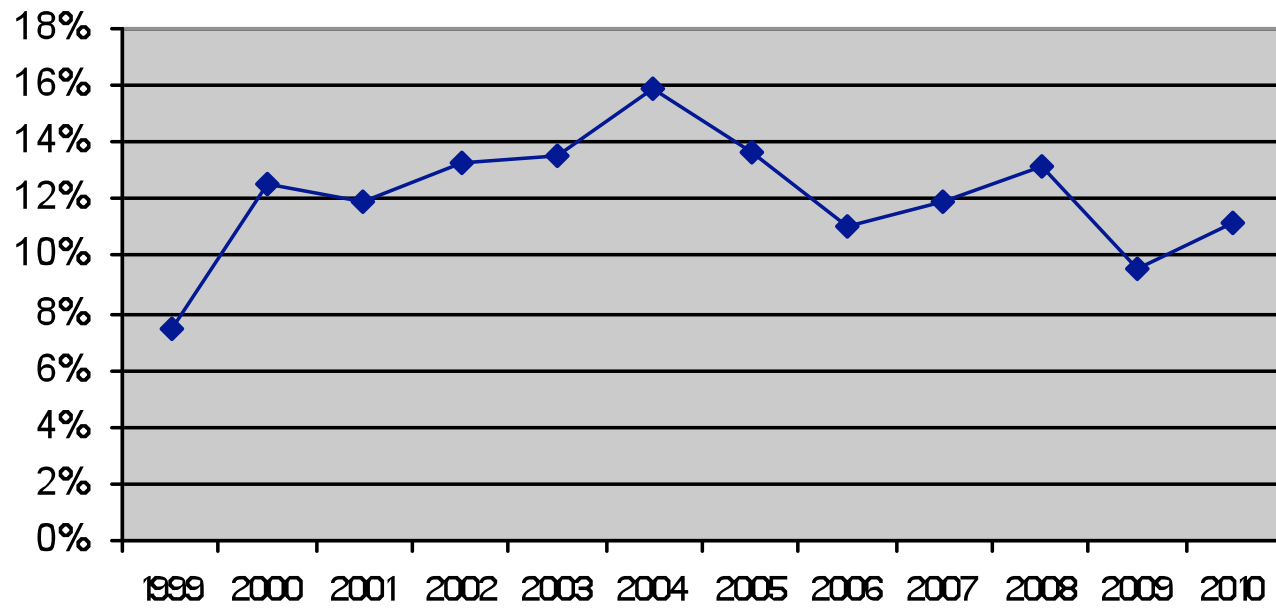
Department of Economic Development & Transportation





Department of Economic Development & Transportation

Exploration - Nunavut as % of Canada



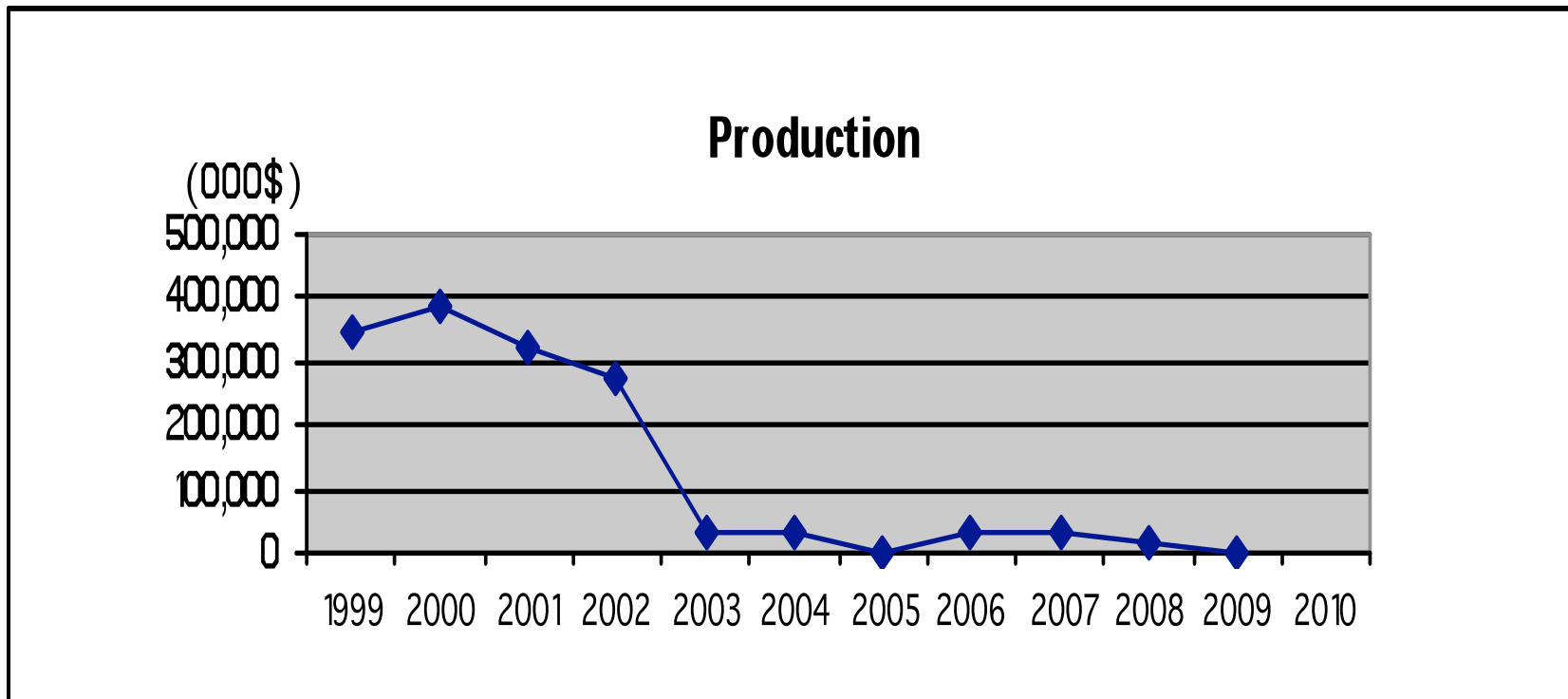


Department of Economic Development & Transportation

4. Contribution to the Economy

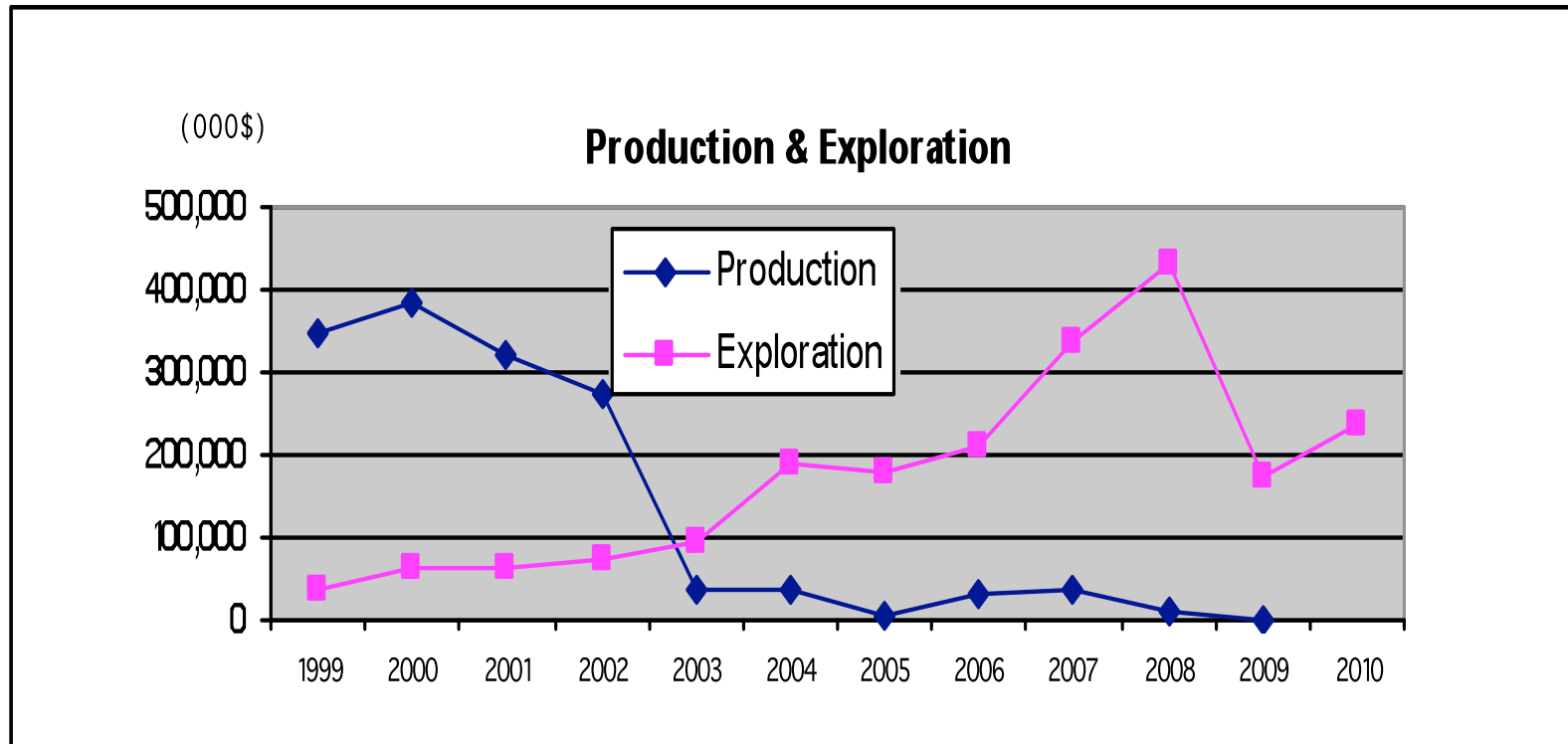


Department of Economic Development & Transportation



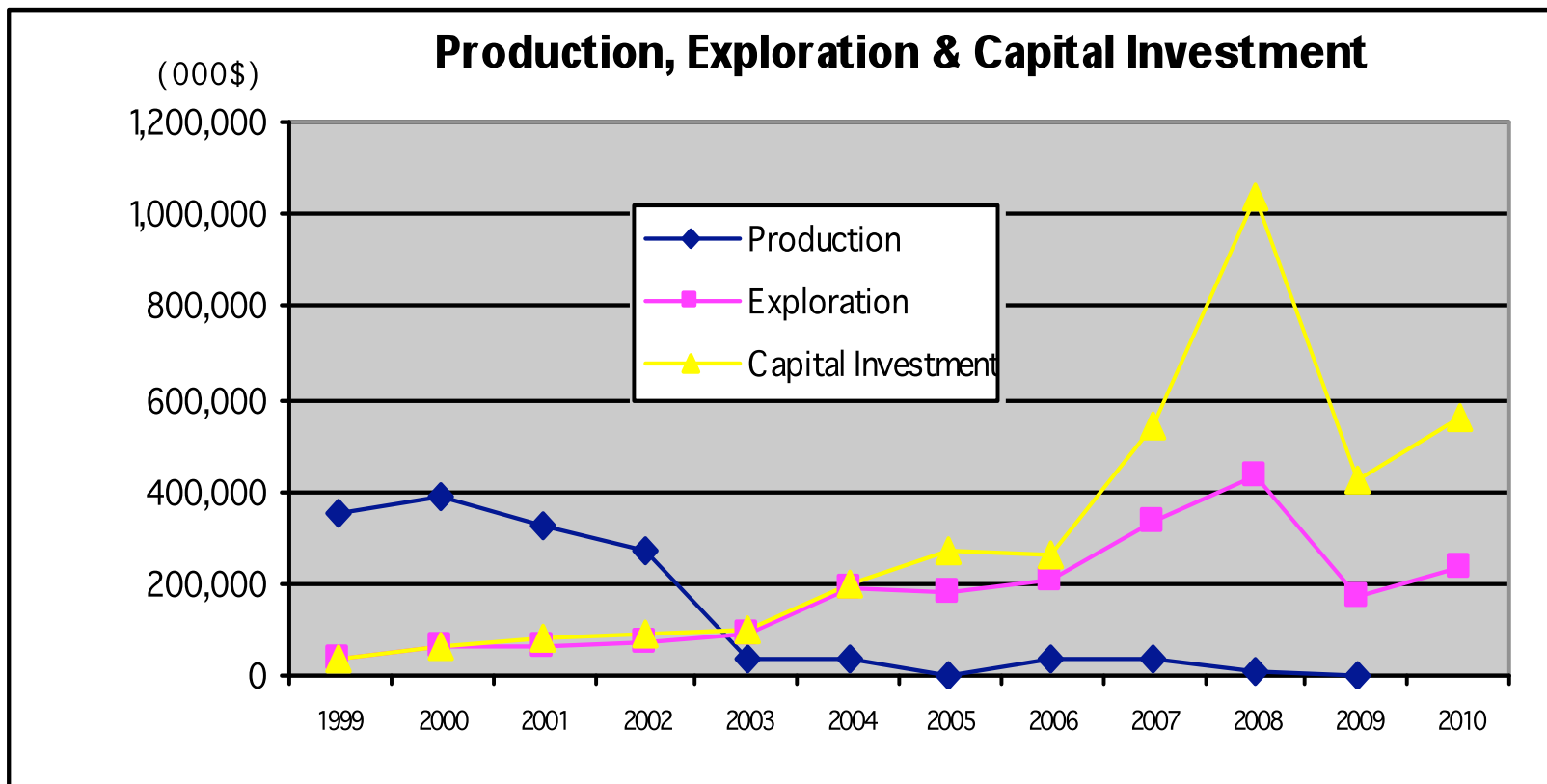


Department of Economic Development & Transportation





Department of Economic Development & Transportation



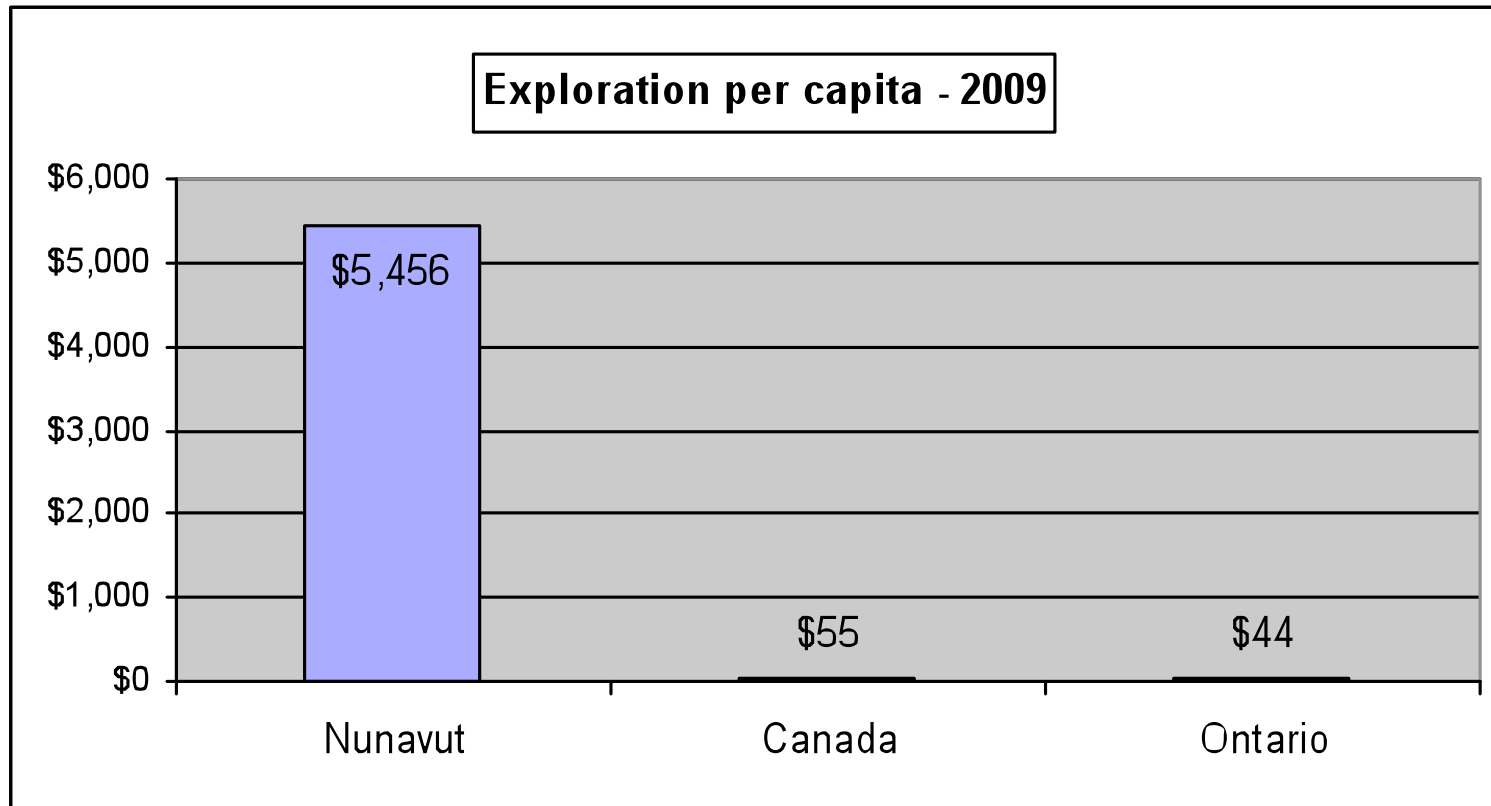


Department of Economic Development & Transportation

5. Relative importance of exploration

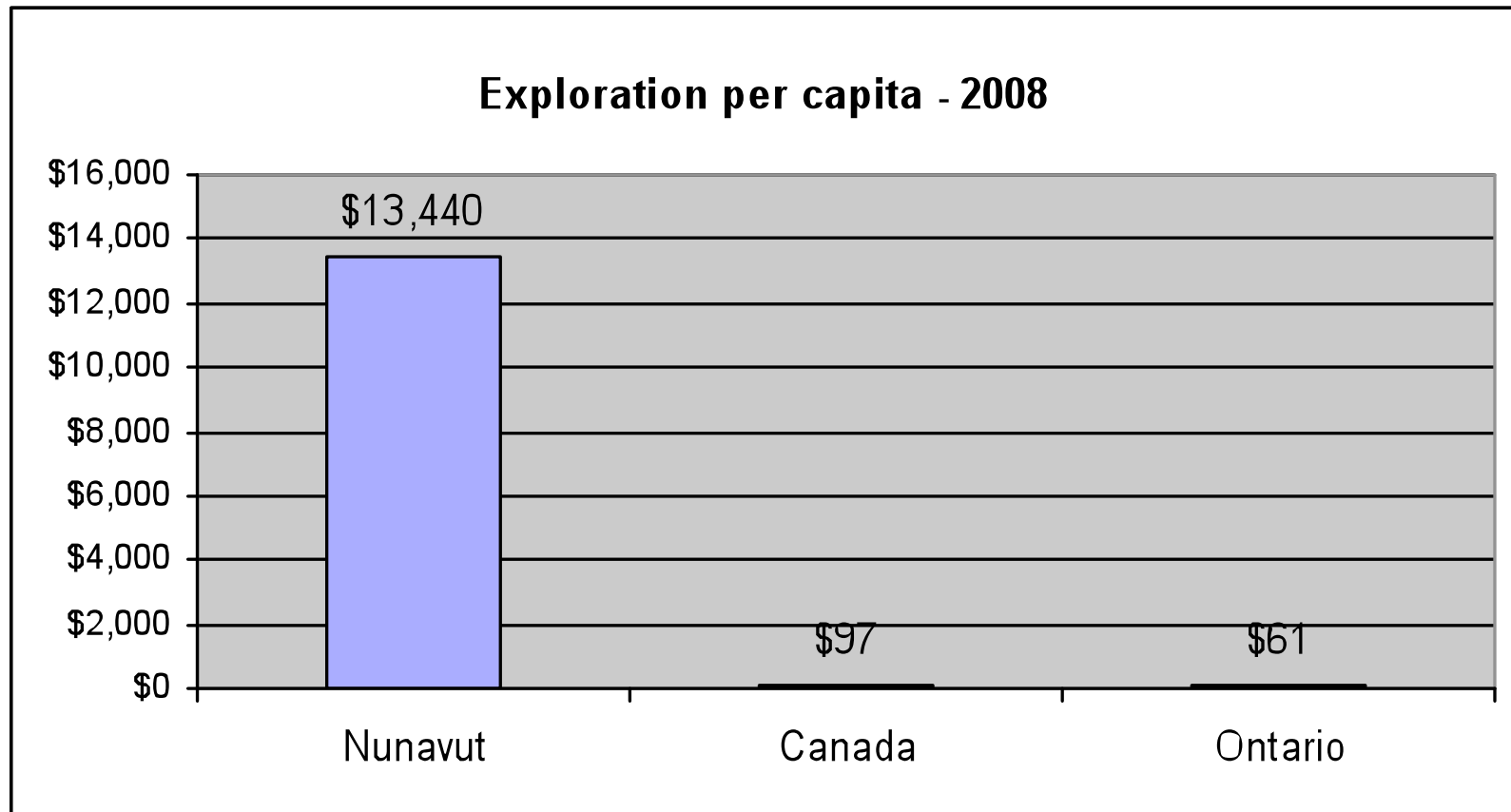


Department of Economic Development & Transportation





Department of Economic Development & Transportation





Department of Economic Development & Transportation

The first ten years in brief

- **Sporadic in nature, yet positive trend**
- **Gain of interest in exploration**
- **Large investments**



Department of Economic Development & Transportation

Glance at the at the next 10 years

- High level of construction expected**
- Production increases**
- Economic evolution**
- Opportunities**



Department of Economic Development & Transportation

Taima

Qujannamiik