



Why Map Selection for Nunavut?

- Nunavut has great, under-explored geology
- Settled comprehensive land claim
- Desire for responsible development of minerals for economic development
- Need to remain competitive with other jurisdictions
- Desire for collaborative and balanced process that reduces impacts to the environment



Modernization of Mineral Tenure

What does modernization mean in the context of mineral tenure?

- Embracing existing technology tools
- Pursuing innovation
- Working hard
- Realizing change

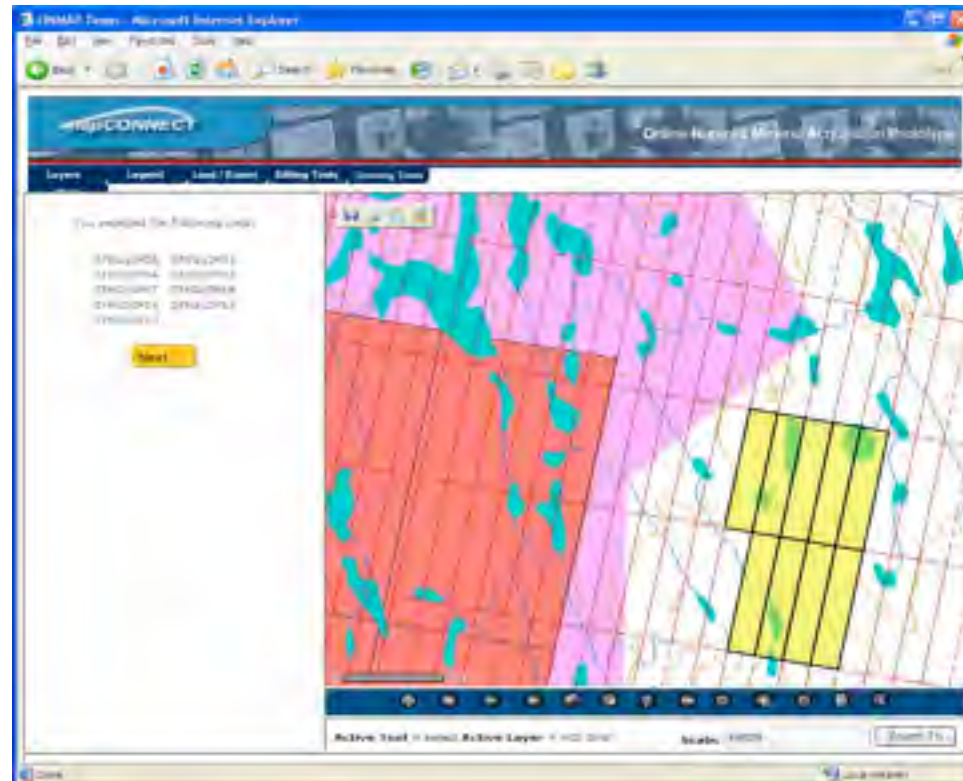


Map Selection for Nunavut

Before...



After!





Map Selection for Nunavut: Positive Outcomes

1. Fair and consistent administration of mineral rights
2. Sustainable economic development of scarce non-renewable resources
3. Less environmental impact
4. Increased economic development opportunities for Nunavummiut
5. No claim disputes and no mineral claim inspections
6. Remaining competitive with other jurisdictions in Canada
7. Potential to recycle fee revenues to pay for system or provide funding to geoscience initiatives



Map Selection for Nunavut: History

2003

- Indian and Northern Affairs Canada Nunavut Regional Office (NRO) began exploring options

2004-2006

- NRO continued to define map selection through several independent reports, industry and NTI consultation

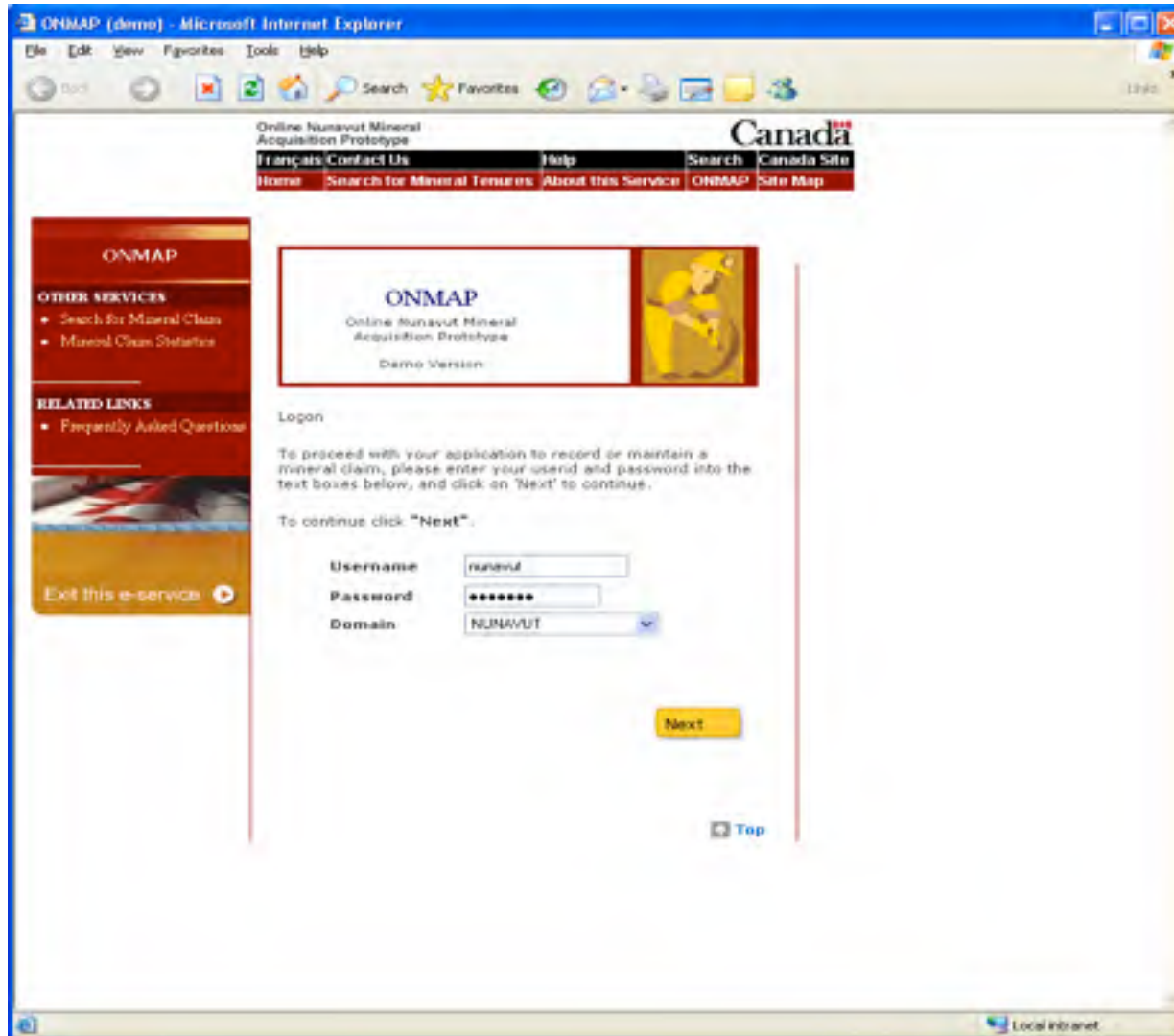
2006-2007

- NRO launched prototype ONMAP that facilitated consultation and gathered user requirements



Nunavut Map Selection Prototype

(ONMAP – Online Nunavut Mineral Acquisition Prototype)





Map Selection for Nunavut: 06/07 Prototype Consultations

Important principles and specifics brought out:

- Increase certainty of title;
- Decrease staking costs to increase money spent on actual exploration;
- On demand access to information;
- Maintain competitive aspect (reduce ability to have large tracts of land taken out by one company);
- Integrate good aspects of prospecting permits into map selection system; and,
- Preserve maximum claim size ~1,200 ha.



Map Selection for Nunavut:

Nunavut Regional Office Suggested Solutions

- Escalating fee scale to discourage large land acquisitions
- Escalating work requirements to discourage speculative land holding
- Land use planning process integration: knowing where restrictions may occur Potential to collaborate with NTI and better align regimes
- Automatic notification to Regional Inuit Associations if claim is on IOL Surface Lands



Map Selection for Nunavut

Effect of Map Selection on:

- Local Prospectors;
- Long term leasing of mineral claims (incl. surveys);
- Work requirements;
- Prospecting Permits;
- Existing tenure;
- Ease of large acquisitions; and,
- Level of self service.



Map Selection for Nunavut: Current Work

Project Planning

- Business Case
- Detailed user needs/requirements
- Detailed technical analysis
- Begin drafting changes to legislation

Stakeholder Engagement

- NRO staff
- Positive support from senior INAC officials
- Limited industry engagement at the moment





Next Steps – Timeline

Years 1 and 2

- Detailed requirements
- Legislative changes
- Begin internal transition in development mode

Years 3 and 4

- Finalize legislative changes
- Full internal testing of solution and implement services where possible
- Implement user training program

Years 4 and 5

- Finalize development
- Full implementation

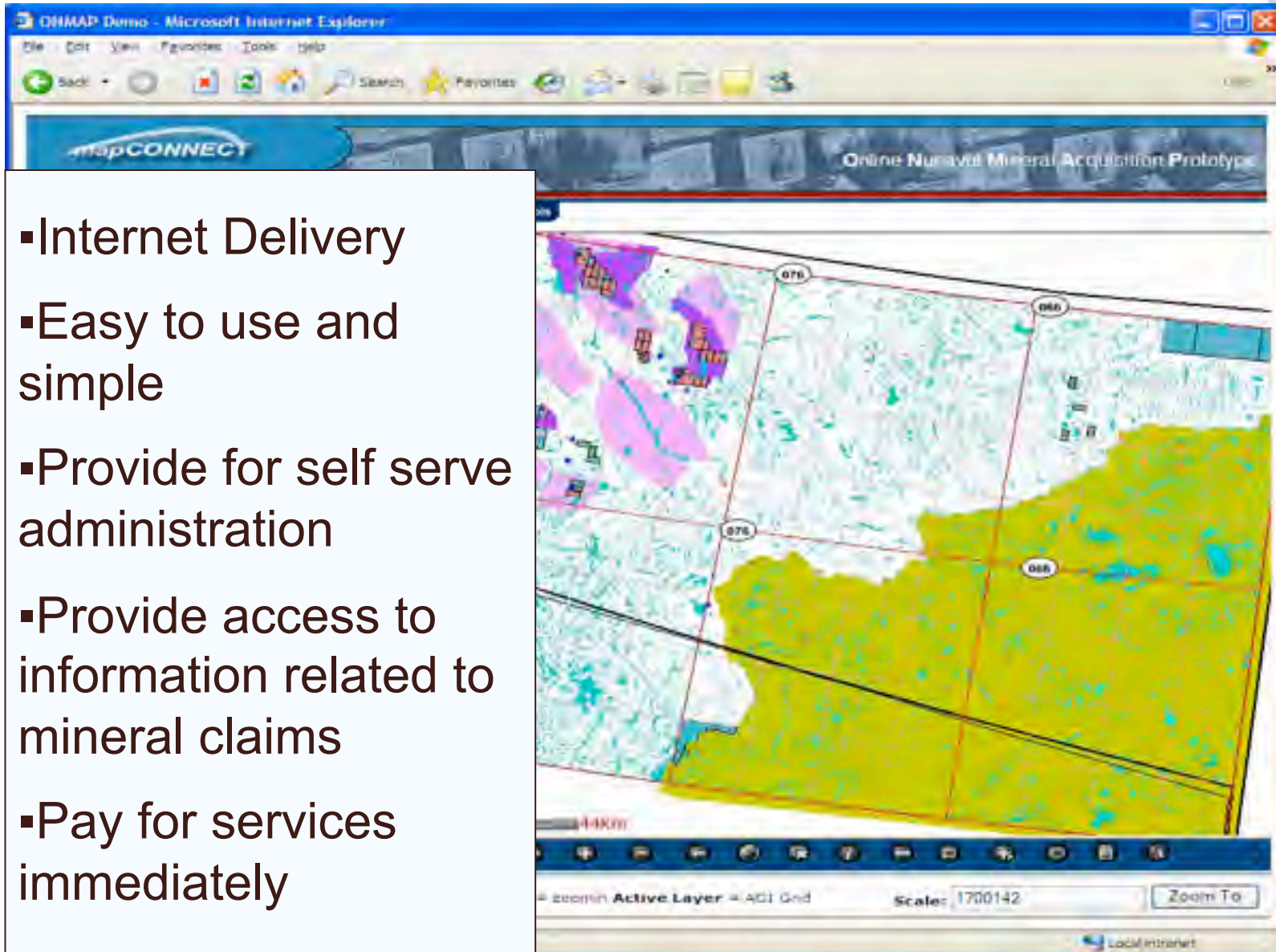


Indian and Northern
Affairs Canada

Affaires indiennes
et du Nord Canada

Technical Components

- Internet Delivery
- Easy to use and simple
- Provide for self serve administration
- Provide access to information related to mineral claims
- Pay for services immediately



Canada



Indian and Northern
Affairs Canada

Affaires indiennes
et du Nord Canada

Time for Questions and Comments



Contact Information

Patrick O'Neill

(819) 997-9828

Patrick.Oneill@ainc-inac.gc.ca

Anna North

(819) 956-0291

Anna.North@ainc-inac.gc.ca

Bernie Maclsaac

(867) 975-4501

Bernie.Maclsaac@ainc-inac.gc.ca

