

The background of the slide is a photograph of a vast, flat, open landscape, likely a tundra or a similar high-altitude environment. The ground is covered in low-lying vegetation, including mosses and lichens, interspersed with rocks. In the distance, two people are standing, providing a sense of scale to the vastness of the area. The sky is filled with soft, white clouds, and the overall lighting is natural, suggesting an overcast day.

**Forum Uranium Corp.**

**The North Thelon Project:  
The Search for Another Kiggavik**

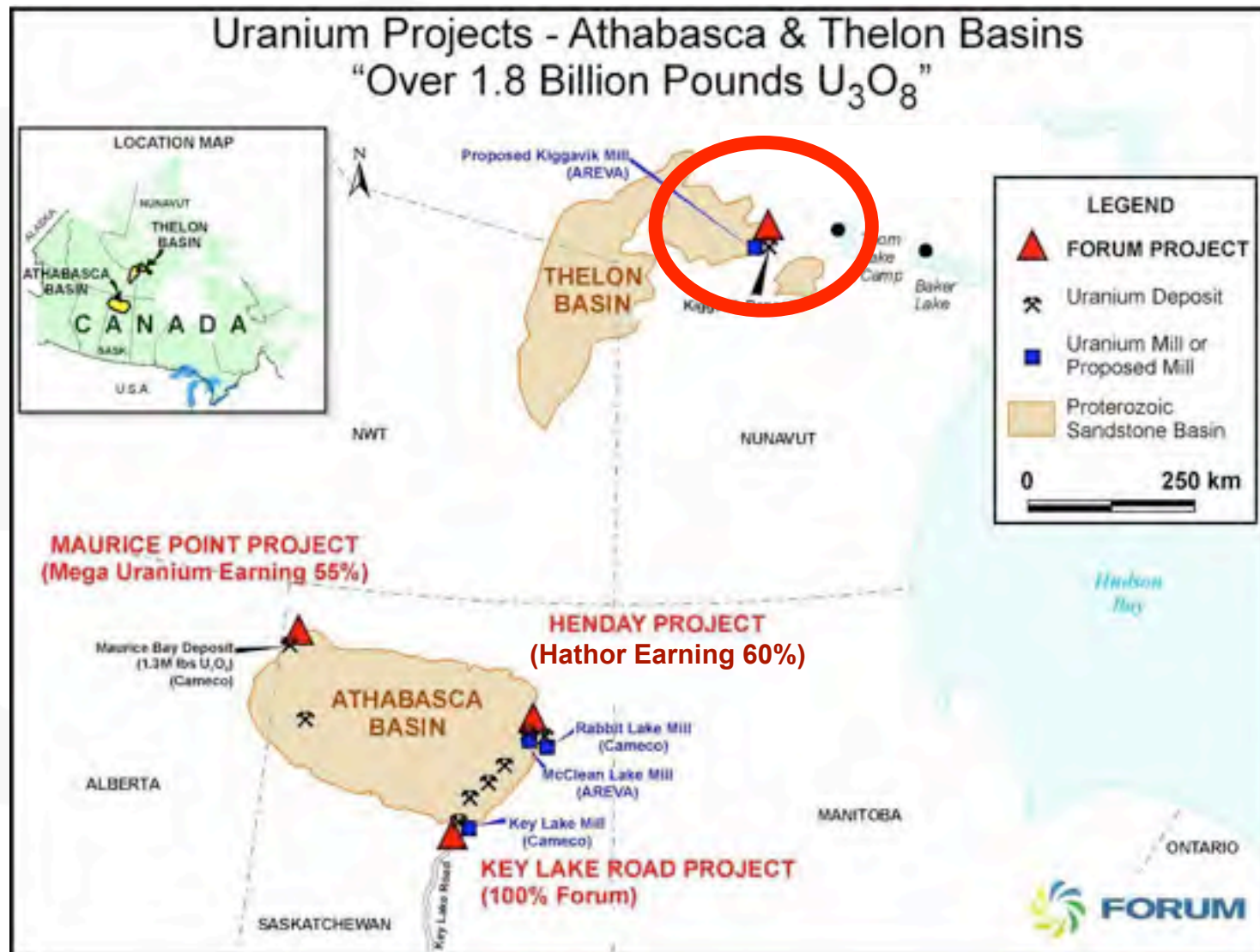
**Rick Mazur, President & CEO, Forum Uranium Corp.**

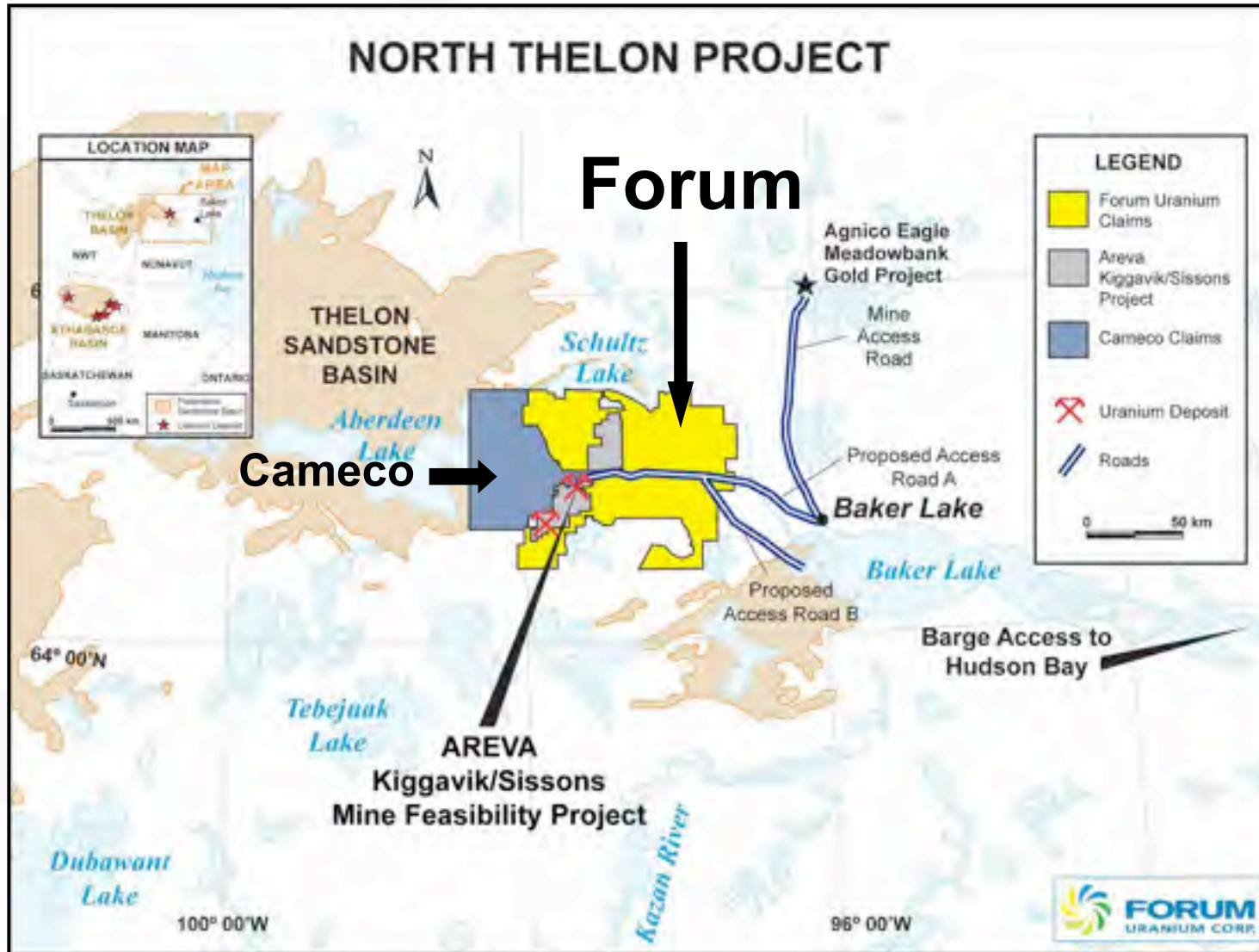
**Ken Wheatley, VP Exploration**

# FORUM EXPLORATION TEAM

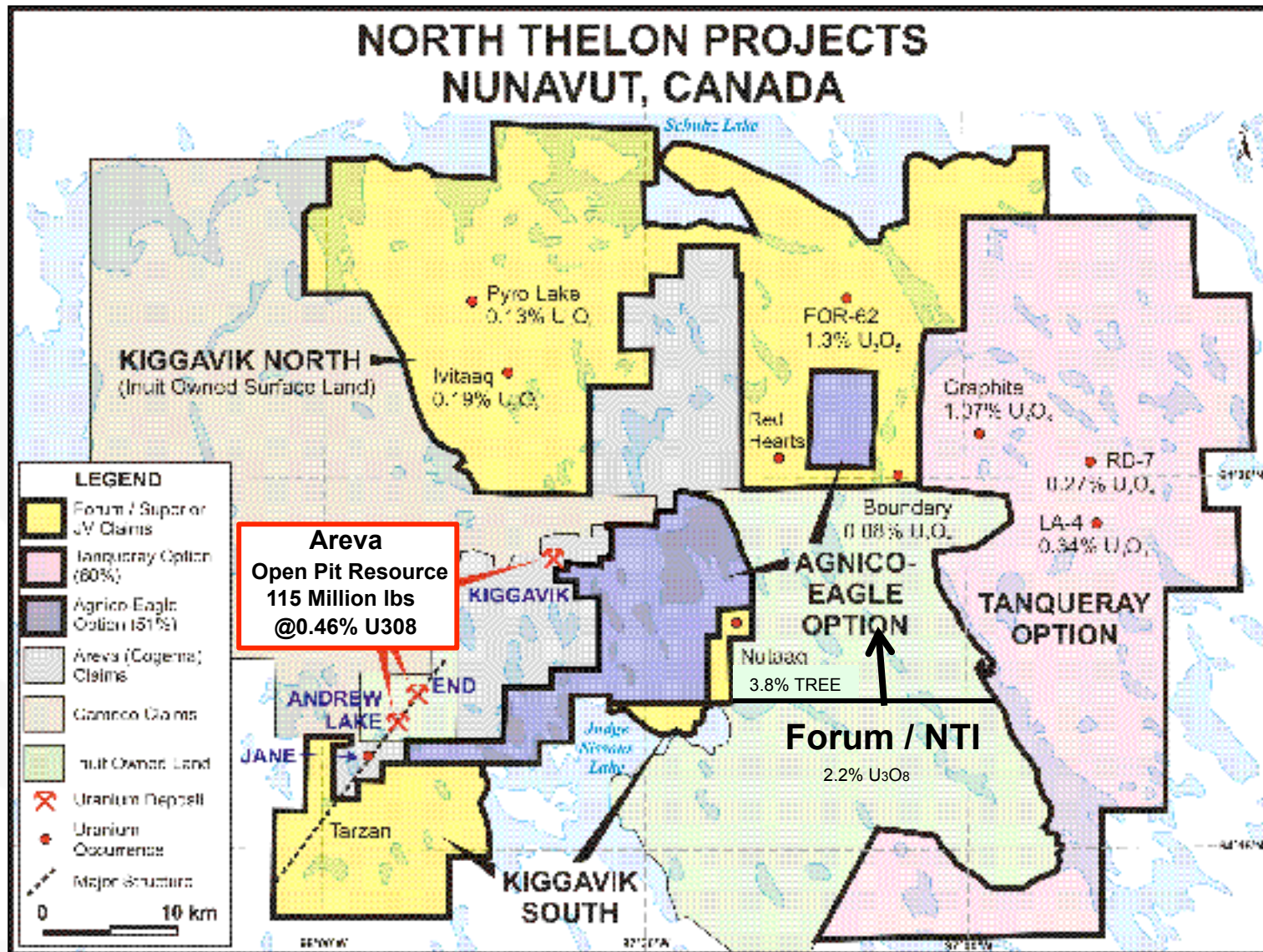


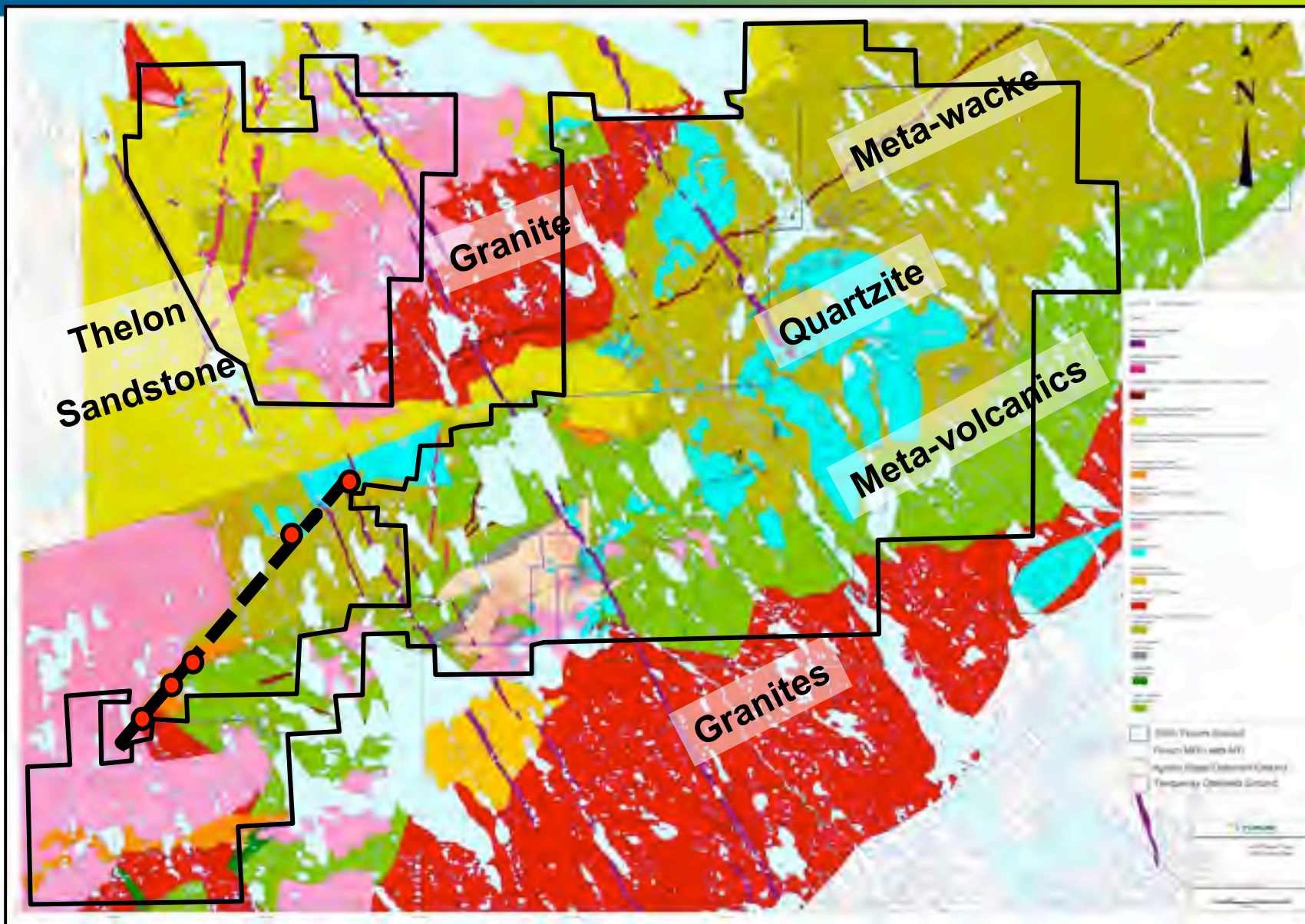
	<b>Uranium Experience</b>
• <b>Rick Mazur, P. Geo., President &amp; CEO, Director</b>	<b>15 yrs</b>
• <b>Ken Wheatley, P. Geo., Vice President Exploration</b>	<b>30 yrs</b>
• <b>Dr. Boen Tan, P. Geo., Chief Geologist</b>	<b>38 yrs</b>
• <b>Phil Robertshaw, P. Geo., Geophysical Consultant</b>	<b>30 yrs</b>
• <b>Bruce Harmeson, Manager, Logistics &amp; Procurement</b>	<b>15 yrs</b>
• <b>Tony Williamson, Senior Geologist</b>	<b>9 yrs</b>

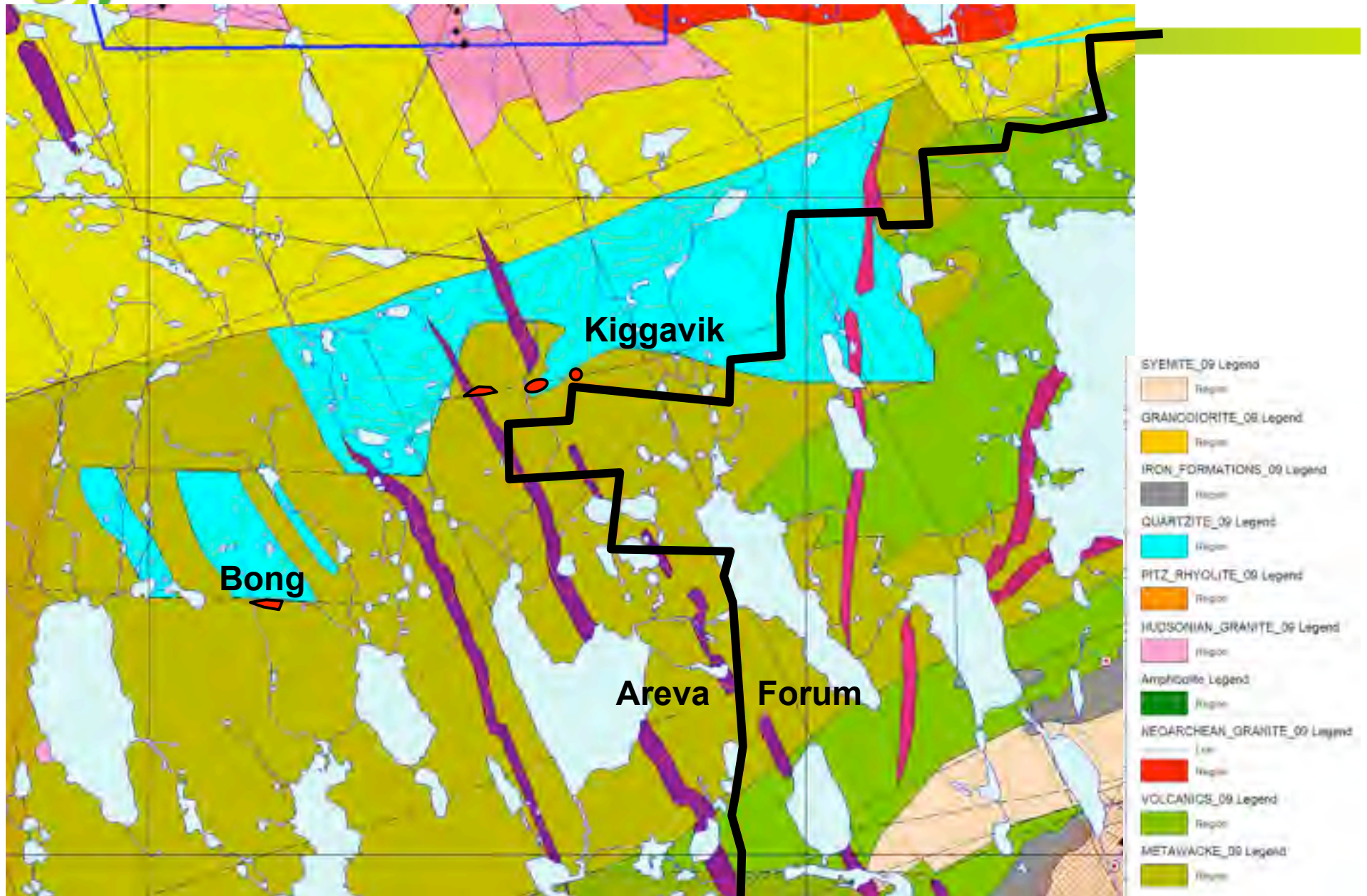




- March, 2006 – NTI Draft Uranium Policy
- April, 2006 – Forum Commences Staking
- March, 2007 – Option on Tanqueray Property
- Summer, 2007 – Mapping and Prospecting
- March, 2008 – Option on Agnico-Eagle Property
- April/May, 2008 – Airborne Resistivity Survey
- Summer, 2008 – Ground Gravity and Drilling
- December, 2008 – NTI Exploration Agreement
- Summer, 2009 – Mapping and Prospecting on NTI Land (Ukaliq) and REE Sampling



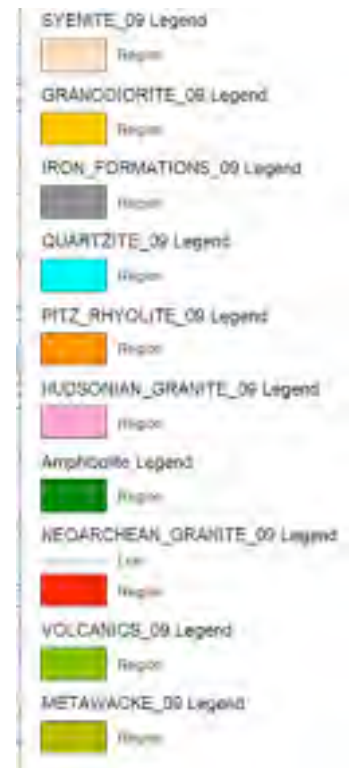
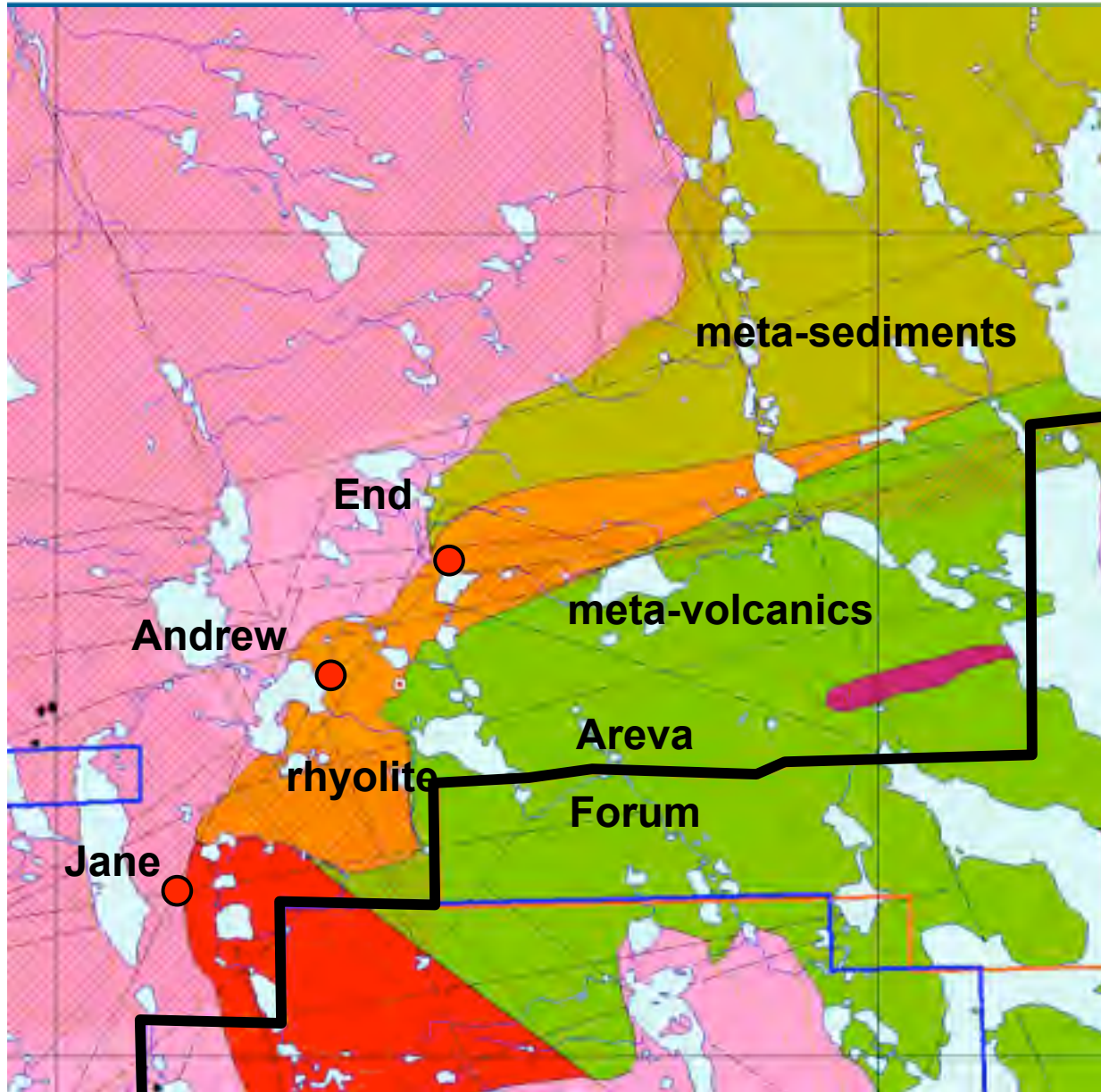


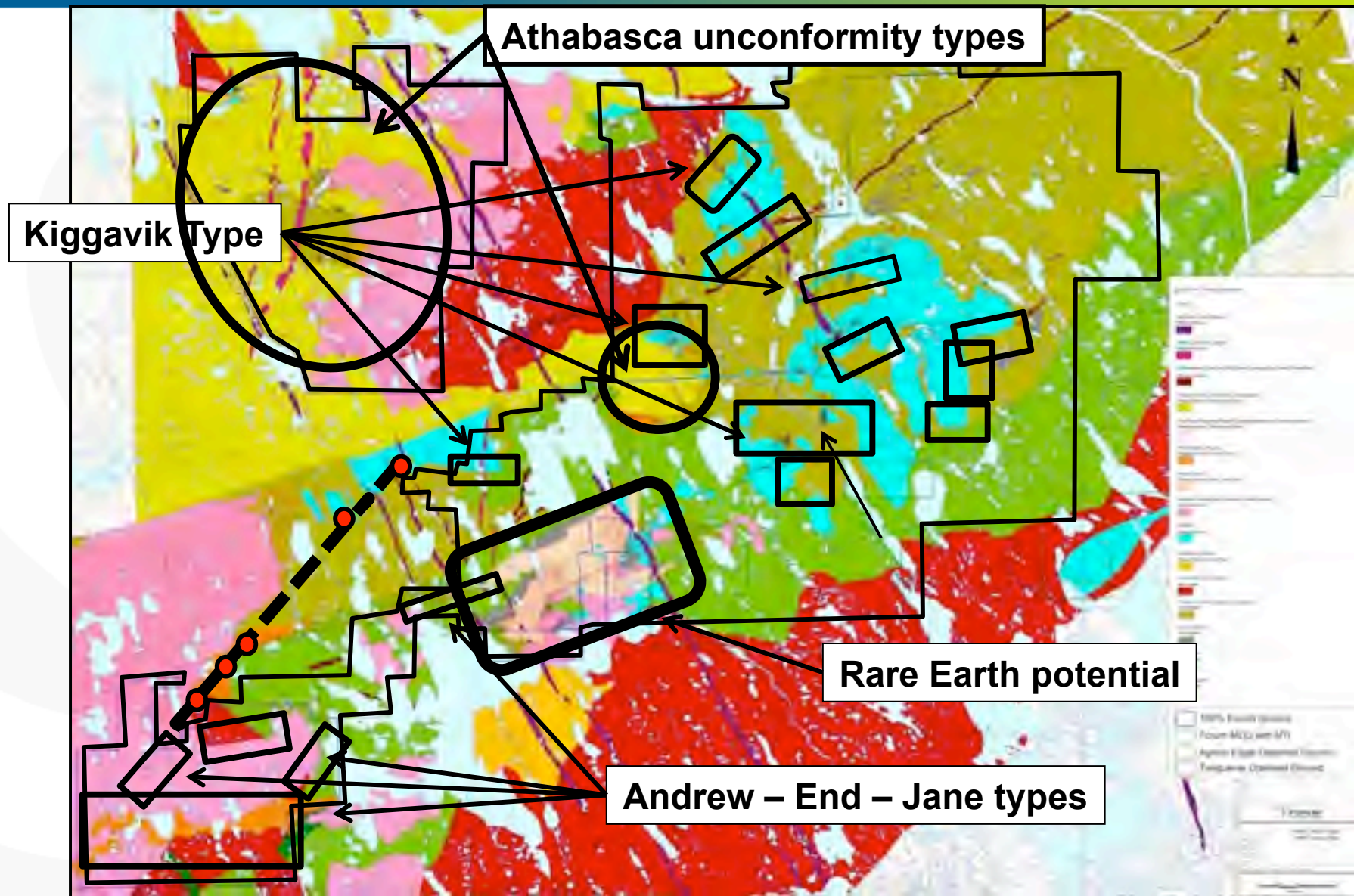


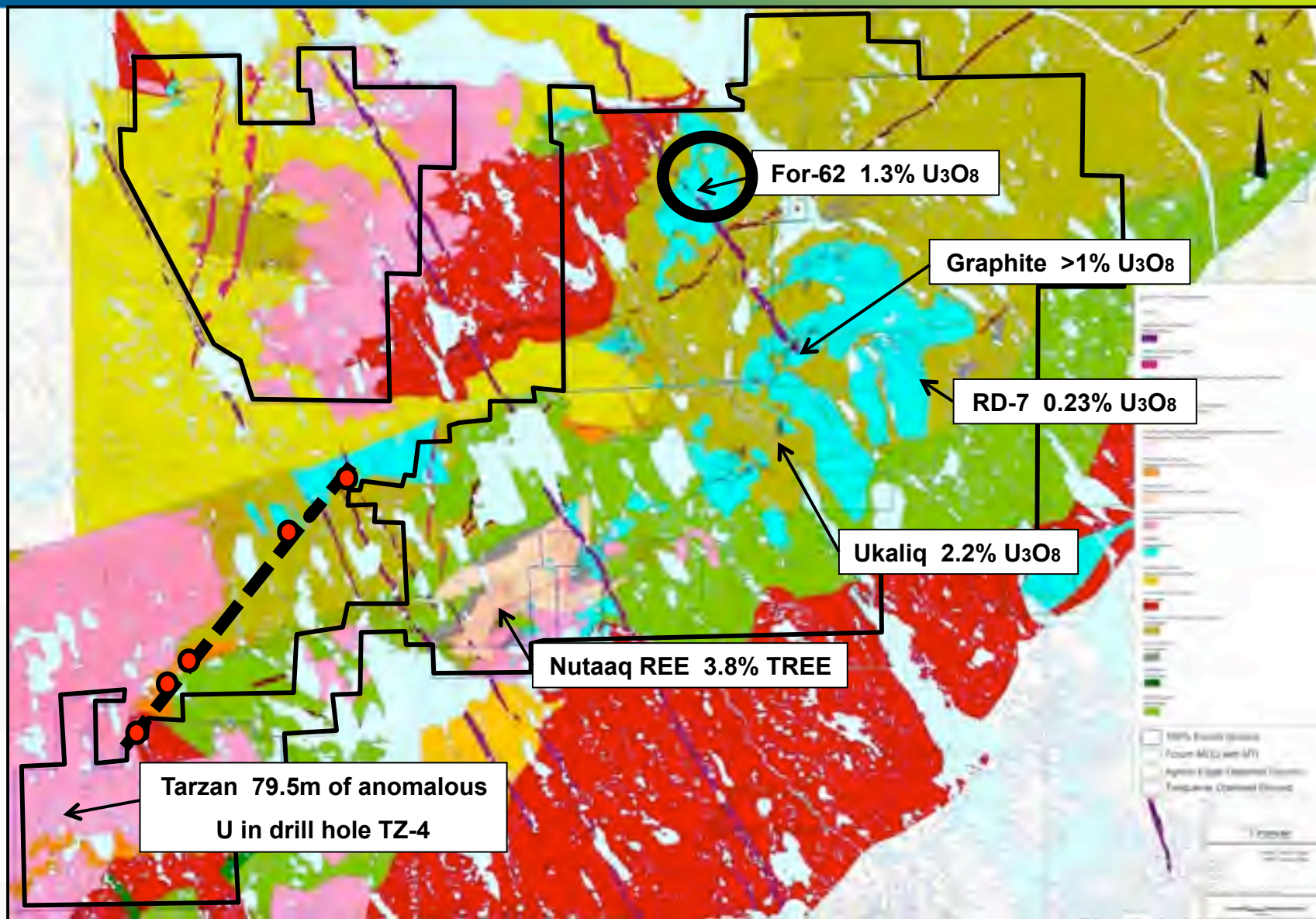




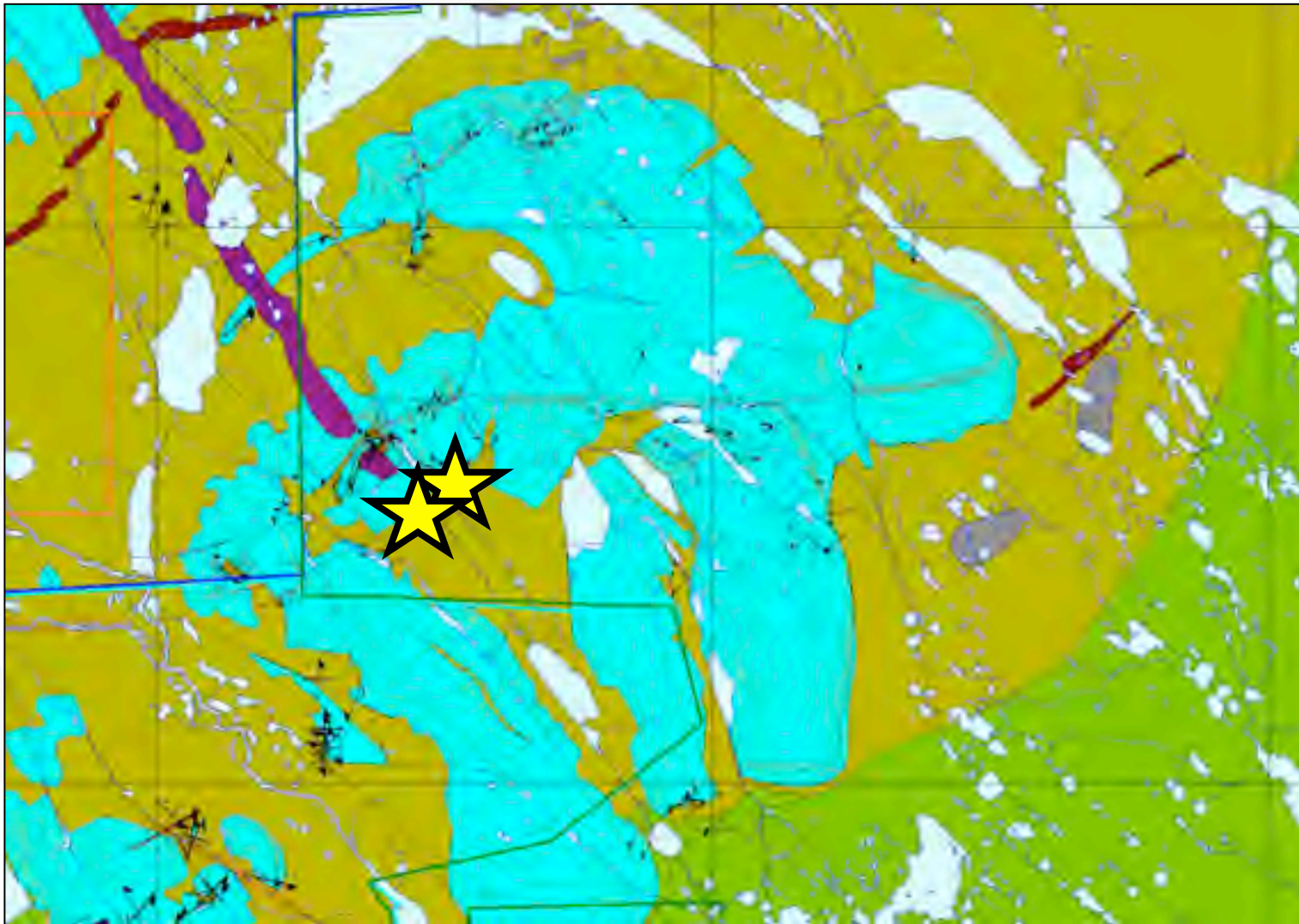
# GEOLOGY OF END, ANDREW and JANE



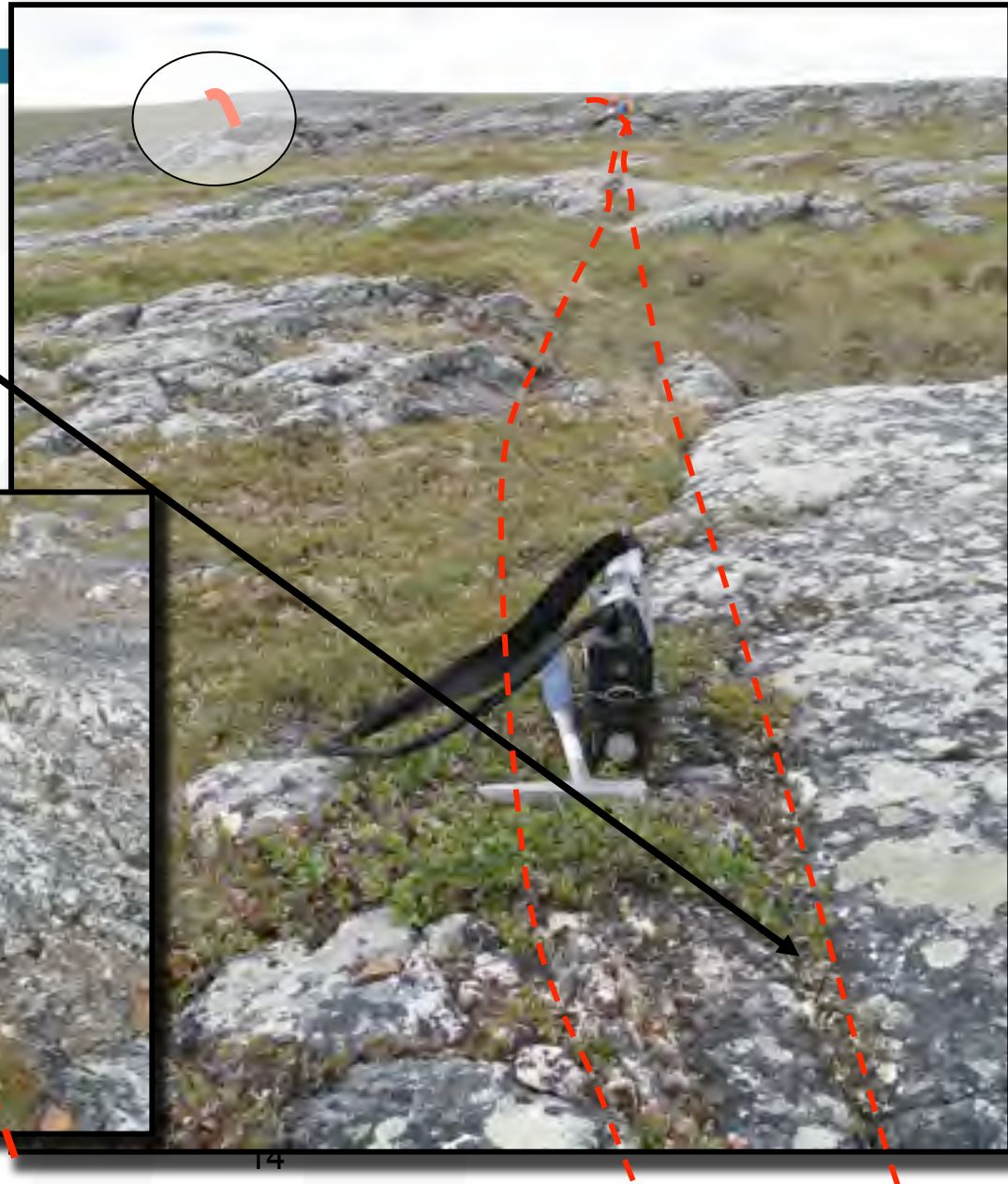


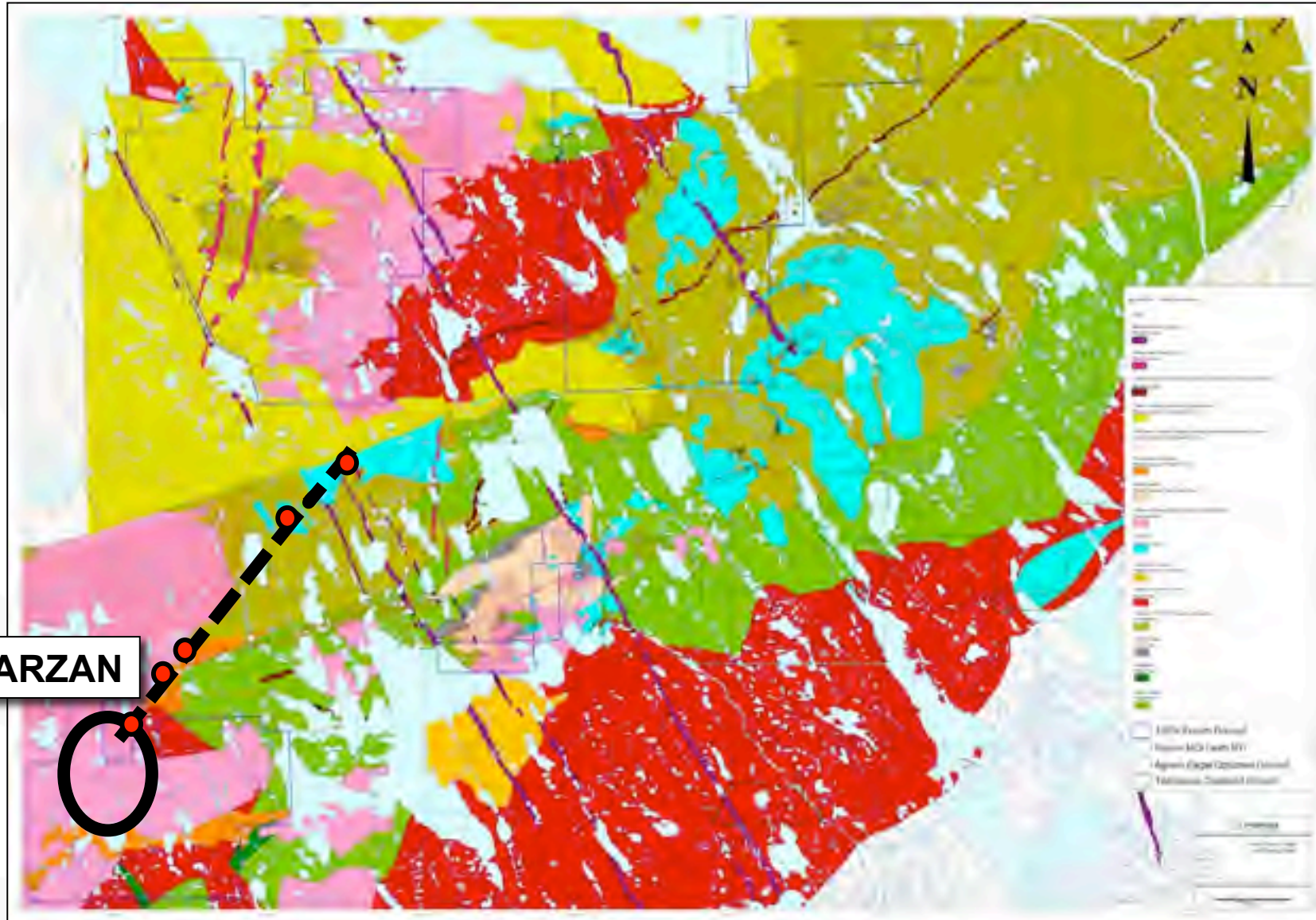


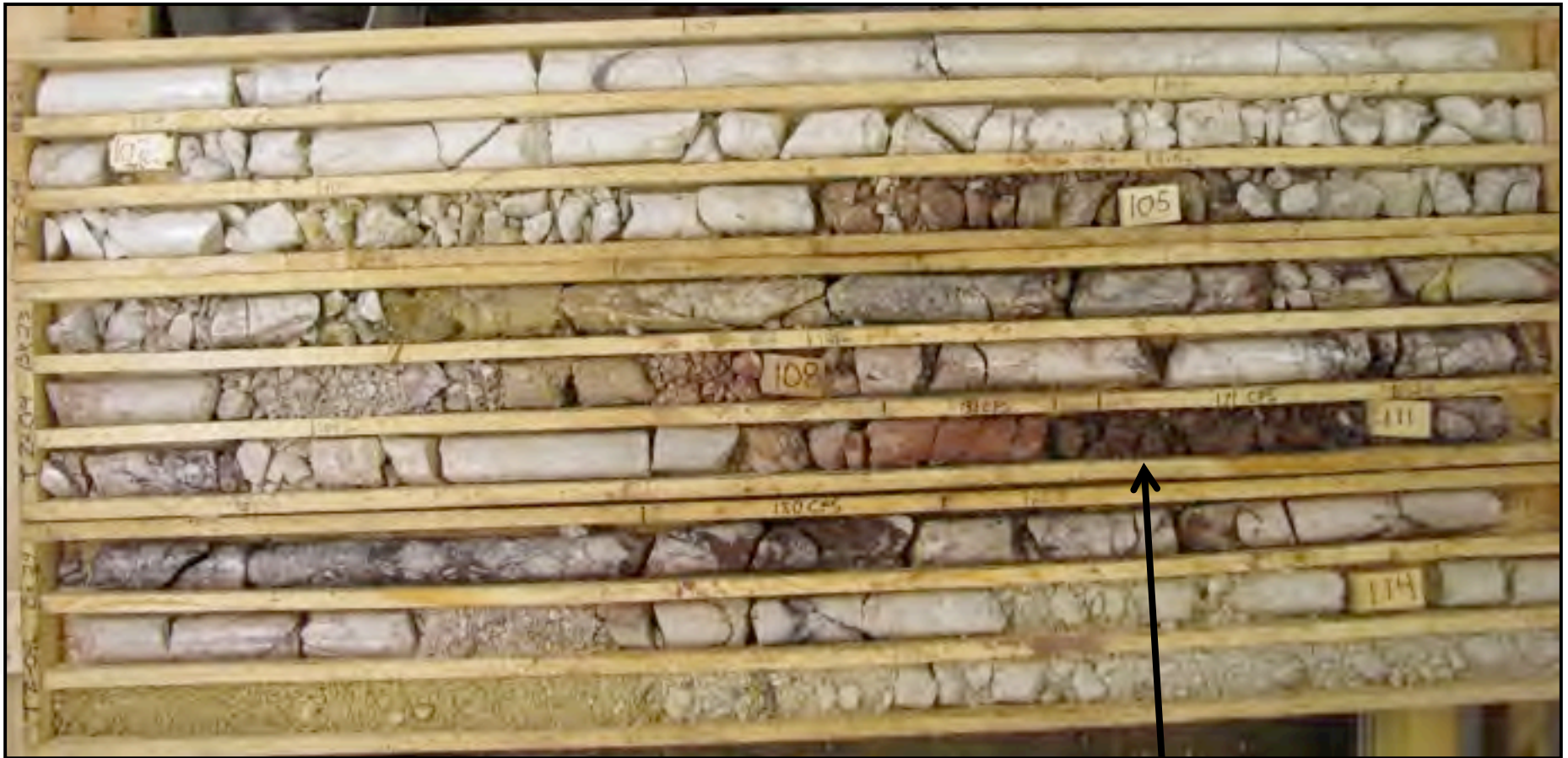




**Uranium: 1.07%  $U_3O_8$   
at surface in a series  
of ENE shear zones /  
conglomerates**

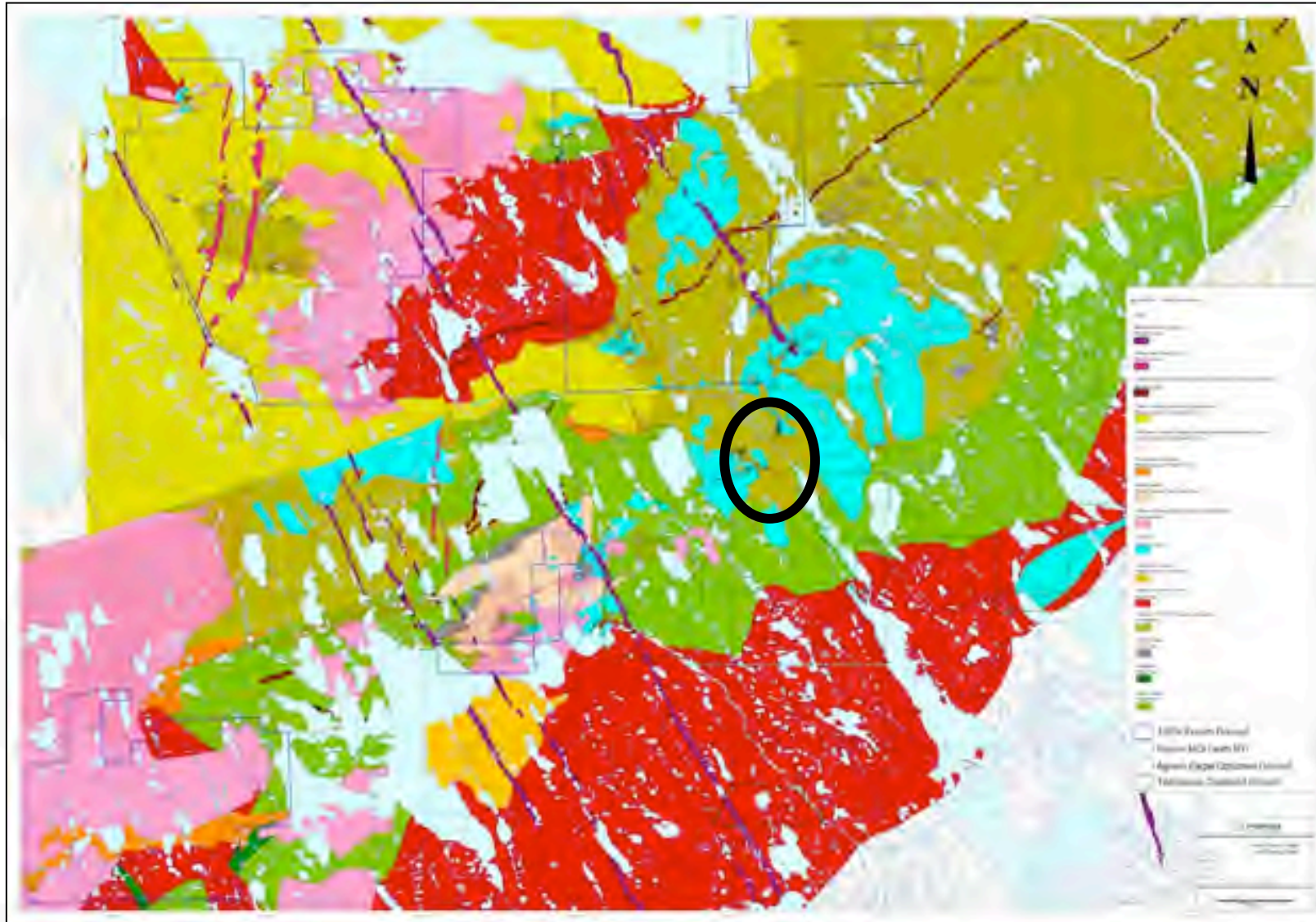




**Tarzan Area****TZ - 04**

**22ppm U over 79.5m, with a spot high of 2 metres of 152ppm U**







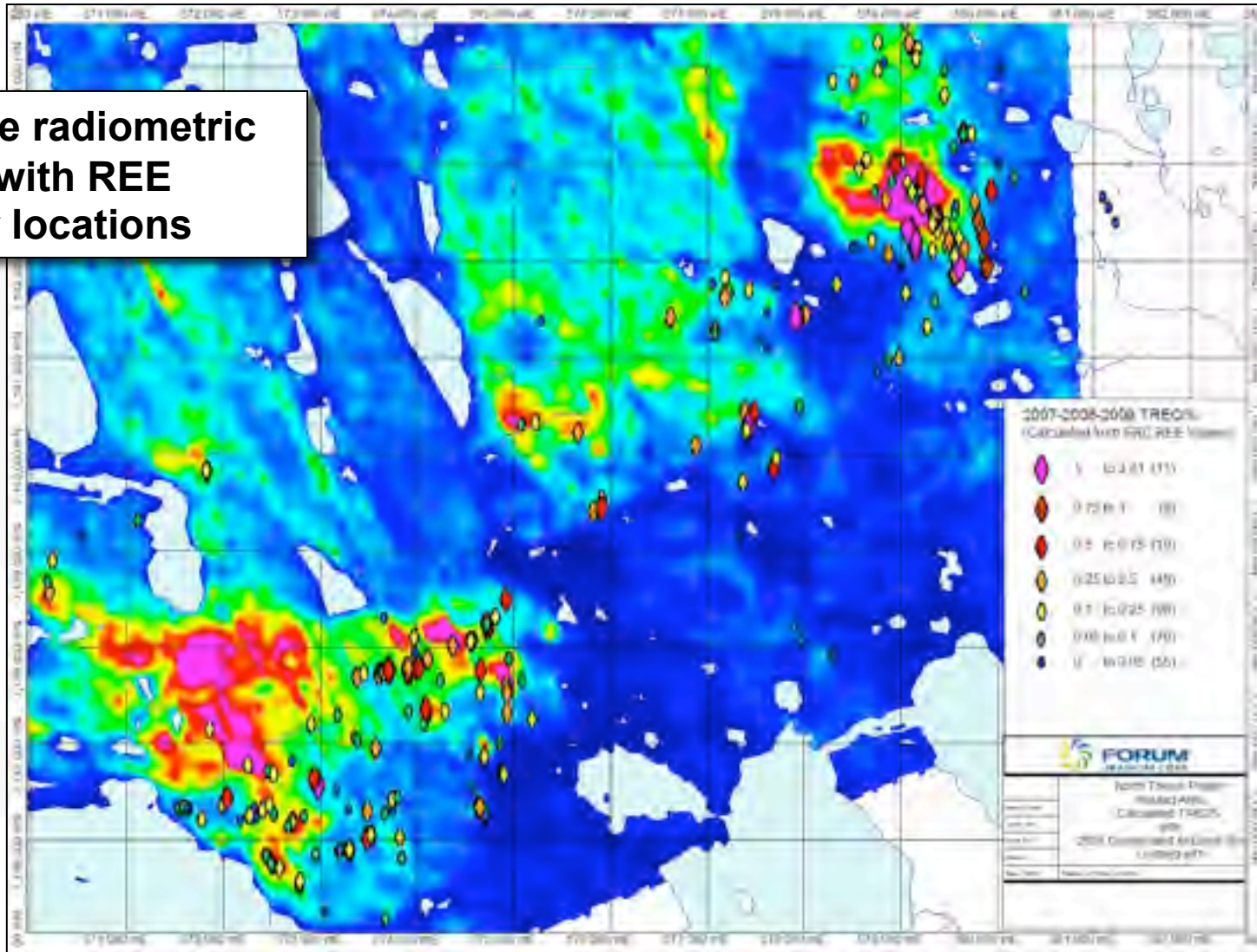
up to 2.2% U

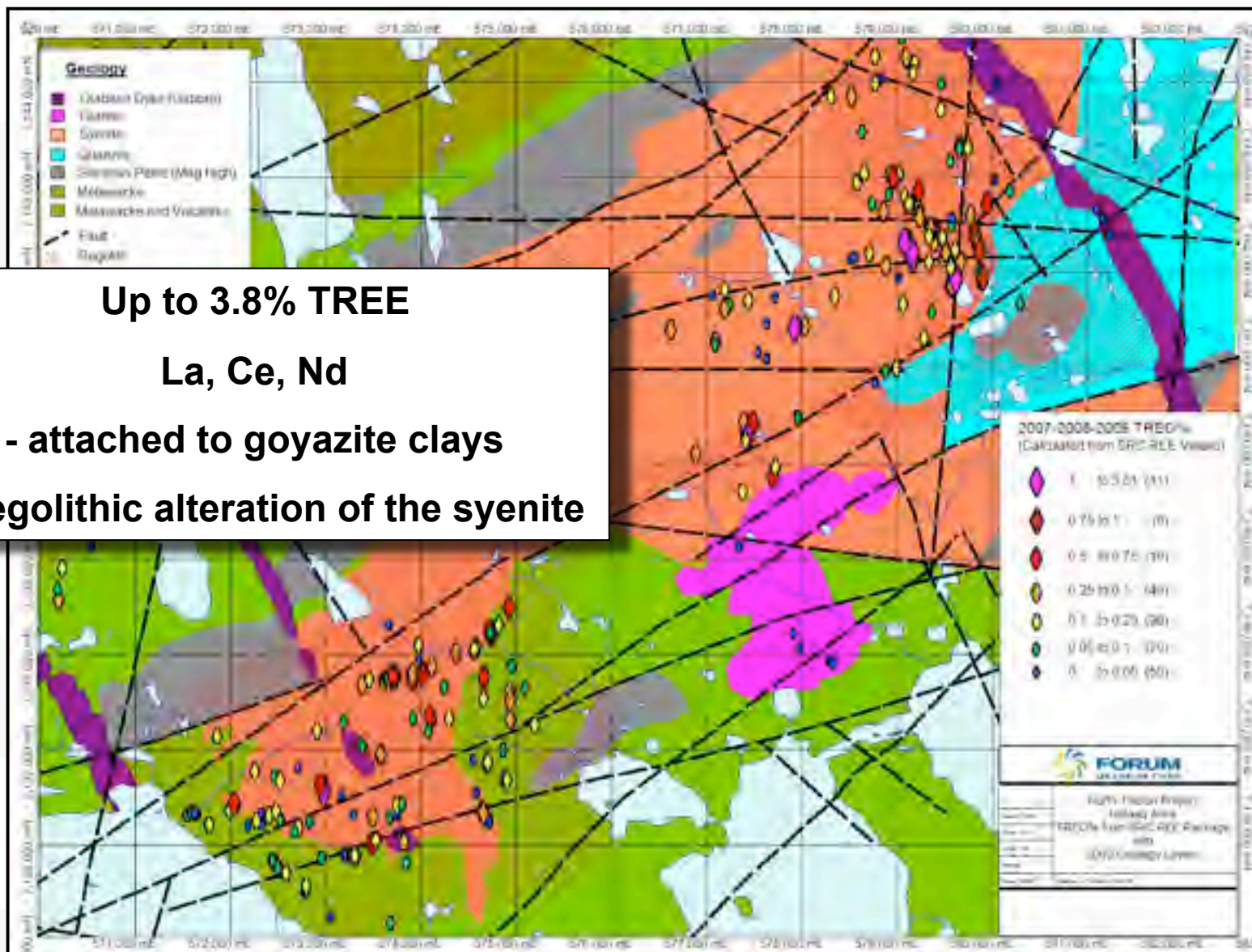






**Airborne radiometric survey with REE boulder locations**






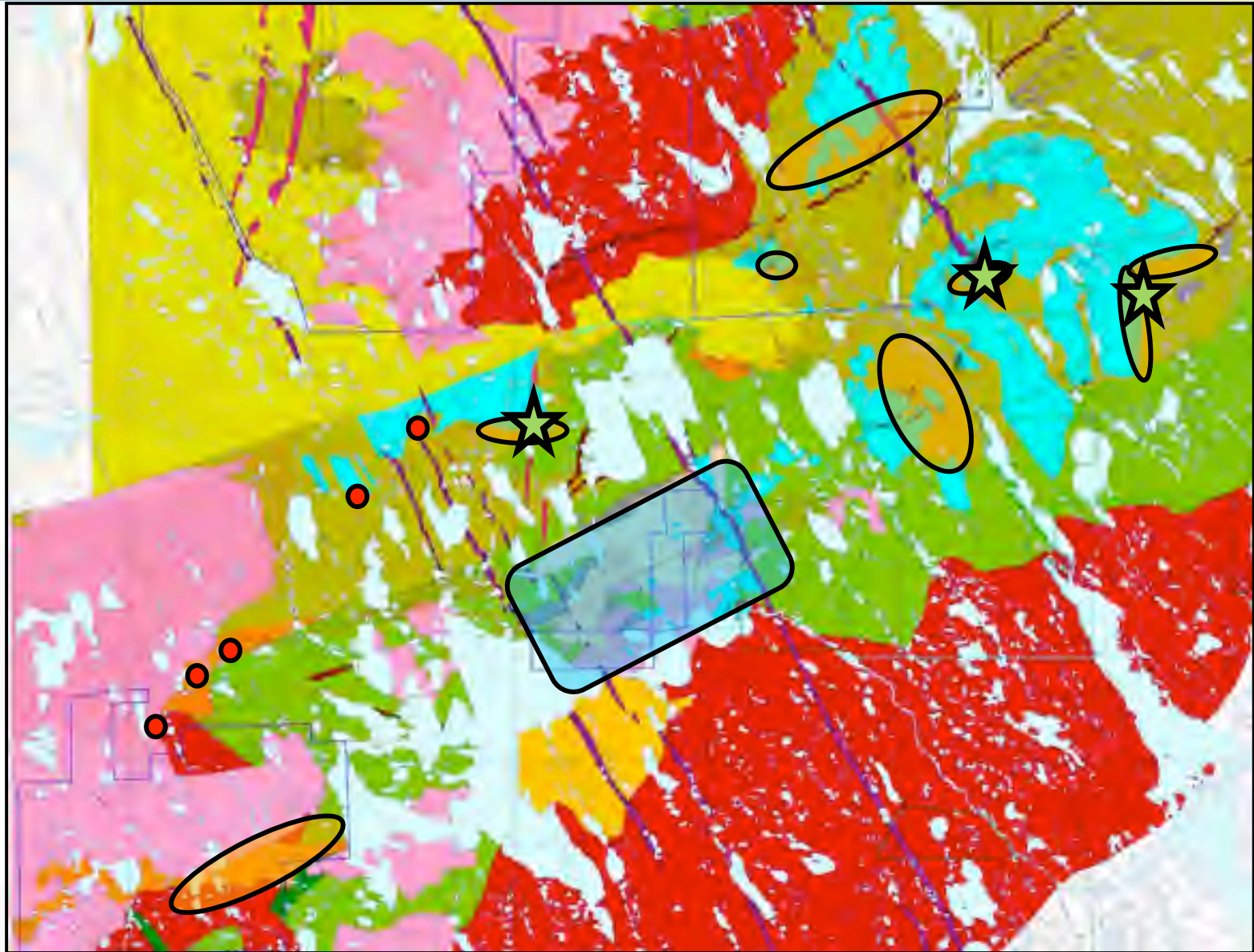
**Up to 3.8% TREE**

**La, Ce, Nd**


**- attached to goyazite clays**

**in regolithic alteration of the syenite**





gravity



REE



possible  
drilling



**Mining Analysts at Kiggavik – hopefully coming to Forum’s discovery next . .**

